

# Hitachi Content Platform Anywhere Enterprise

v7.5

---

## Drive Connect User Guide

This document describes how to use Drive Connect with HCP Anywhere Enterprise.

© 2023 Hitachi Vantara LLC. All rights reserved.

No part of this publication may be reproduced or transmitted in any form or by any means, electronic or mechanical, including copying and recording, or stored in a database or retrieval system for commercial purposes without the express written permission of Hitachi, Ltd., or Hitachi Vantara LLC (collectively "Hitachi"). Licensee may make copies of the Materials provided that any such copy is: (i) created as an essential step in utilization of the Software as licensed and is used in no other manner; or (ii) used for archival purposes. Licensee may not make any other copies of the Materials. "Materials" mean text, data, photographs, graphics, audio, video and documents.

Hitachi reserves the right to make changes to this Material at any time without notice and assumes no responsibility for its use. The Materials contain the most current information available at the time of publication.

Some of the features described in the Materials might not be currently available. Refer to the most recent product announcement for information about feature and product availability, or contact Hitachi Vantara LLC at <https://support.hitachivantara.com/en-us/contact-us.html>.

Notice: Hitachi products and services can be ordered only under the terms and conditions of the applicable Hitachi agreements. The use of Hitachi products is governed by the terms of your agreements with Hitachi Vantara LLC.

By using this software, you agree that you are responsible for:

- 1) Acquiring the relevant consents as may be required under local privacy laws or otherwise from authorized employees and other individuals; and
- 2) Verifying that your data continues to be held, retrieved, deleted, or otherwise processed in accordance with relevant laws.

**Notice on Export Controls.** The technical data and technology inherent in this Document may be subject to U.S. export control laws, including the U.S. Export Administration Act and its associated regulations, and may be subject to export or import regulations in other countries. Reader agrees to comply strictly with all such regulations and acknowledges that Reader has the responsibility to obtain licenses to export, re-export, or import the Document and any Compliant Products.

Hitachi and Lumada are trademarks or registered trademarks of Hitachi, Ltd., in the United States and other countries.

AIX, AS/400e, DB2, Domino, DS6000, DS8000, Enterprise Storage Server, eServer, FICON, FlashCopy, GDPS, HyperSwap, IBM, Lotus, MVS, OS/390, PowerHA, PowerPC, RS/6000, S/390, System z9, System z10, Tivoli, z/OS, z9, z10, z13, z14, z/VM, and z/VSE are registered trademarks or trademarks of International Business Machines Corporation.

Active Directory, ActiveX, Bing, Excel, Hyper-V, Internet Explorer, the Internet Explorer logo, Microsoft, Microsoft Edge, the Microsoft corporate logo, the Microsoft Edge logo, MS-DOS, Outlook, PowerPoint, SharePoint, Silverlight, SmartScreen, SQL Server, Visual Basic, Visual C++, Visual Studio, Windows, the Windows logo, Windows Azure, Windows PowerShell, Windows Server, the Windows start button, and Windows Vista are registered trademarks or trademarks of Microsoft Corporation. Microsoft product screen shots are reprinted with permission from Microsoft Corporation.

All other trademarks, service marks, and company names in this document or website are properties of their respective owners.

Copyright and license information for third-party and open source software used in Hitachi Vantara products can be found in the product documentation, at <https://www.hitachivantara.com/en-us/company/legal.html> or [https://knowledge.hitachivantara.com/Documents/Open\\_Source\\_Software](https://knowledge.hitachivantara.com/Documents/Open_Source_Software).

---

# Contents

<b>Preface</b> .....	<b>4</b>
About this document.....	4
Document conventions.....	4
Intended audience.....	4
Accessing product downloads.....	4
Getting Help.....	4
<b>Chapter 1. Getting Started</b> .....	<b>6</b>
The HCP Anywhere Enterprise Drive Connect Requirements.....	6
Installing HCP Anywhere Enterprise Drive Connect.....	6
Windows.....	6
macOS.....	6
Opening HCP Anywhere Enterprise Drive Connect.....	9
Connecting To a HCP Anywhere Enterprise Portal.....	10
Setting Up a New Connection.....	10
Using an Existing Connection.....	12
Disconnecting From a HCP Anywhere Enterprise Portal.....	13
Editing a Connection Bookmark.....	15
Deleting a Connection.....	16
<b>Chapter 2. Configuring HCP Anywhere Enterprise Drive Connect Preferences</b> .....	<b>17</b>
General Settings.....	18
Sync Settings.....	19
Notifications Settings.....	20
Configuring Notifications at the Operating System Level.....	21
Bandwidth Settings.....	23
Connection Settings.....	24
Login Item Settings.....	25
Update Settings.....	26
Language Settings.....	27
<b>Chapter 3. Working With HCP Anywhere Enterprise Drive Connect</b> .....	<b>29</b>
Displaying the Cloud Drive Content.....	29
Icons Used with Folders and Files.....	29
The Right-click Menu.....	30
Creating a Folder.....	32
Uploading Folders and Files.....	32
<b>Chapter 4. Upgrading HCP Anywhere Enterprise Drive Connect</b> .....	<b>33</b>

---

# Preface

## About this document

Hitachi Content Platform Anywhere Enterprise Drive Connect (HCP Anywhere Enterprise Drive Connect) enables you to easily view all your files and files shared with you from the Hitachi Content Platform Anywhere Enterprise Portal (HCP Anywhere Enterprise Portal) either in Windows File Explorer or macOS Finder. Using HCP Anywhere Enterprise Drive Connect you mount your HCP Anywhere Enterprise Portal cloud drive as a disk in Windows File Explorer or macOS Finder so you can work on it as a local volume.

## Document conventions

This document uses the following typographic convention:

Convention	Description
<b>Bold</b>	<ul style="list-style-type: none"><li>Indicates text in a window, including window titles, menus, menu options, buttons, fields, and labels. Example: Click <b>OK</b>.</li><li>Indicates emphasized words in list items.</li></ul>
<i>Italic</i>	Indicates a document title or emphasized words in text.
Monospace	Indicates text that is displayed on screen or entered by the user. Example: <code>pairdisplay -g oradb</code>

## Intended audience

This document is intended for HCP Anywhere Enterprise users from a Windows or macOS PC.

## Accessing product downloads

Product software, drivers, and firmware downloads are available on Hitachi Vantara Support Connect: <https://support.hitachivantara.com/>.

Log in and select Product Downloads to access the most current downloads, including updates that may have been made after the release of the product.

## Getting Help

Hitachi Vantara Support Connect is the destination for technical support of products and solutions sold by Hitachi Vantara. To contact technical support, log on to Hitachi Vantara Support Connect for contact information: [https://support.hitachivantara.com/en\\_us/contact-us.html](https://support.hitachivantara.com/en_us/contact-us.html).

Hitachi Vantara Community is a global online community for customers, partners, independent software vendors, employees, and prospects. It is the destination to get answers, discover insights,

and make connections. **Join the conversation today!** Go to [community.hitachivantara.com](http://community.hitachivantara.com), register, and complete your profile.

---

## Chapter 5. Getting Started

HCP Anywhere Enterprise Drive Connect enables you to easily view all files on your HCP Anywhere Enterprise Portal storage in Windows File Explorer or macOS Finder. Using HCP Anywhere Enterprise Drive Connect you mount your HCP Anywhere Enterprise Portal cloud drive as a disk in Windows File Explorer or macOS Finder so you can work on it as a local volume.

HCP Anywhere Enterprise Drive Connect caches content from the portal so that all your cloud drive content in the portal, cloud folders you own and the files and folders shared with you under Shared With Me, are presented as stubs on your local disk, with ACLs fully supported.

You do not need to explicitly sync a folder, as the cloud drive folder structure and files are automatically visible on the local disk. However, the actual content of the files might not be there, and is downloaded from the portal on demand. This allows full visibility of your entire data, while utilizing a very small amount of local disk space: The main storage remains in the cloud with stubs saved locally. A stub is a file with a tiny footprint that contains the metadata about the file, such as the file name, size, and modification date. Only the folder and file metadata and not the actual file content is saved locally.

When a user accesses a file stub, the file is downloaded and opened locally. Files that are always required locally can be pinned, in which case they, and not the stubs, are stored locally, to allow offline access.

### The HCP Anywhere Enterprise Drive Connect Requirements

HCP Anywhere Enterprise Drive Connect can be installed on Windows 10, Windows 11, Windows servers 2016 and up, or the latest two releases of macOS (to include macOS running on the Apple M1 CPU).

**Note:** Installing HCP Anywhere Enterprise Drive Connect may be problematic if antivirus software that does not recognize HCP Anywhere Enterprise Drive Connect is running on the machine.

### Installing HCP Anywhere Enterprise Drive Connect

Download HCP Anywhere Enterprise Drive Connect from Hitachi Vantara.

**Note:** You will need to restart the PC after installing HCP Anywhere Enterprise Drive Connect.

#### Windows

1. Install HCP Anywhere Enterprise Drive Connect on a Windows platform by double-clicking the downloaded file to run the installation wizard.
2. Follow the installation wizard instructions.

#### macOS

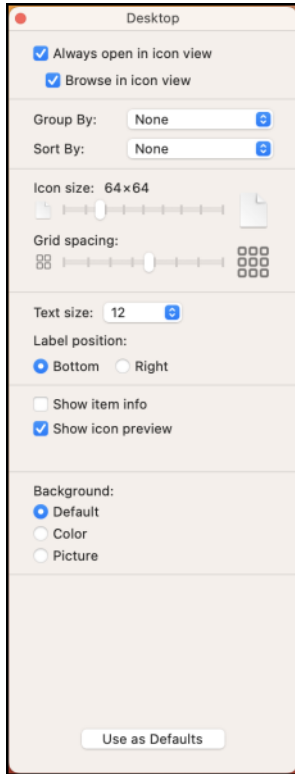
1. Install HCP Anywhere Enterprise Drive Connect on a macOS platform by moving the application package to the Applications directory on your computer.
2. In Finder, double-click the package to run the installation wizard.

3. Follow the installation wizard instructions.

**Note:** If prompted, enter your password and click **Install Software**.

HCP Anywhere Enterprise Drive Connect is installed. It is added as an extension. **Extensions** is located under **Others** in **System Settings > Privacy & Security**.

4. In Finder select Desktop and then choose **View > Show View Options** from the menu bar.



**Note:** If Desktop is not displayed, in **Finder Settings > Sidebar** check the **Desktop** option. The display can be different, dependent on your version and starting point.

5. Clear the **Show icon preview** option.

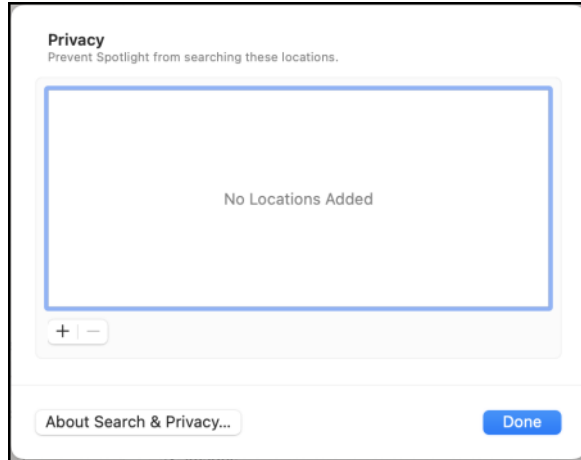
Depending on your Mac version, clearing Show icon preview also disables Calculate all sizes.

6. Click **Use as Defaults** and close the window.

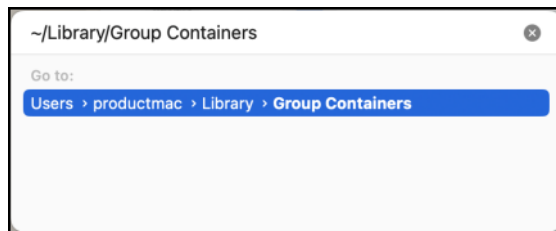
7. In **System Settings > Siri & Spotlight** click **Spotlight Privacy**.



The Privacy window is displayed.



8. Click **+**.
9. In Finder choose **Go > Go to Folder** in the menu bar.
10. Search for **~/Library/Group Containers**.





11. Click the link to display the directory.
12. Drag **KD9X6Y7KA2.com.ctera** to the **Privacy** window.
13. Click **Done**.

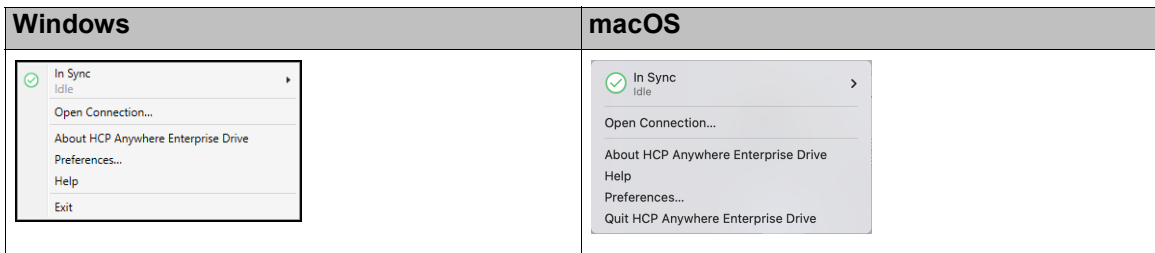
**Note:** If you have previously installed HCP Anywhere Enterprise Drive Connect and created bookmarks, you must delete these bookmarks and then recreate them.

## Opening HCP Anywhere Enterprise Drive Connect

### To open HCP Anywhere Enterprise Drive Connect:

- **Windows:** In Windows search look for HCP Anywhere Enterprise Drive Connect and click the App.
- **macOS:** In Finder select **Applications** and then double-click **HCP Anywhere Enterprise Drive Connect** from the list.

The HCP Anywhere Enterprise Drive Connect icon is added to the Windows taskbar, , or macOS menu bar, . Click this icon to open the HCP Anywhere Enterprise Drive Connect menu.



Use this menu to do any of the following:

- Pause or resume syncing of local content with the HCP Anywhere Enterprise Portal. Hitachi Vantara recommends not pausing the sync with the HCP Anywhere Enterprise Portal.
- List the recently touched files.
- Clear the menu of the list of recently touched files.
- Open a connection with a HCP Anywhere Enterprise Portal.
- Search for a specific connection.
- Display information about HCP Anywhere Enterprise Drive Connect, such as open source licensing.
- Configure your preferences for HCP Anywhere Enterprise Drive Connect.
- Access the online help for HCP Anywhere Enterprise Drive Connect.
- Leave HCP Anywhere Enterprise Drive Connect.

**Note:** When reopening HCP Anywhere Enterprise Drive Connect, if **Save Workspace** is checked in **Preferences > General**, as recommended by Hitachi Vantara, connections to HCP Anywhere Enterprise Portal are reopened.

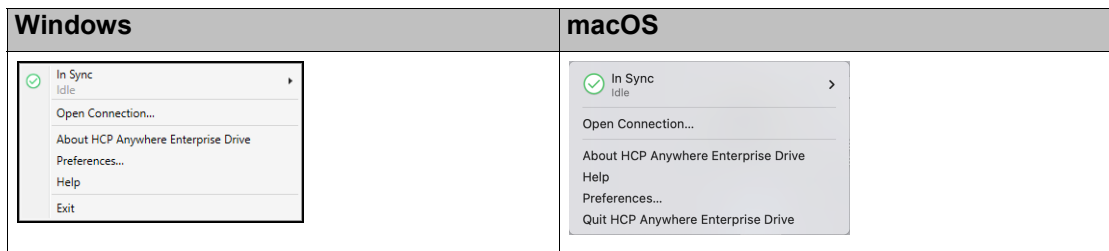
## Connecting To a HCP Anywhere Enterprise Portal

You can connect to more than one HCP Anywhere Enterprise Portal.

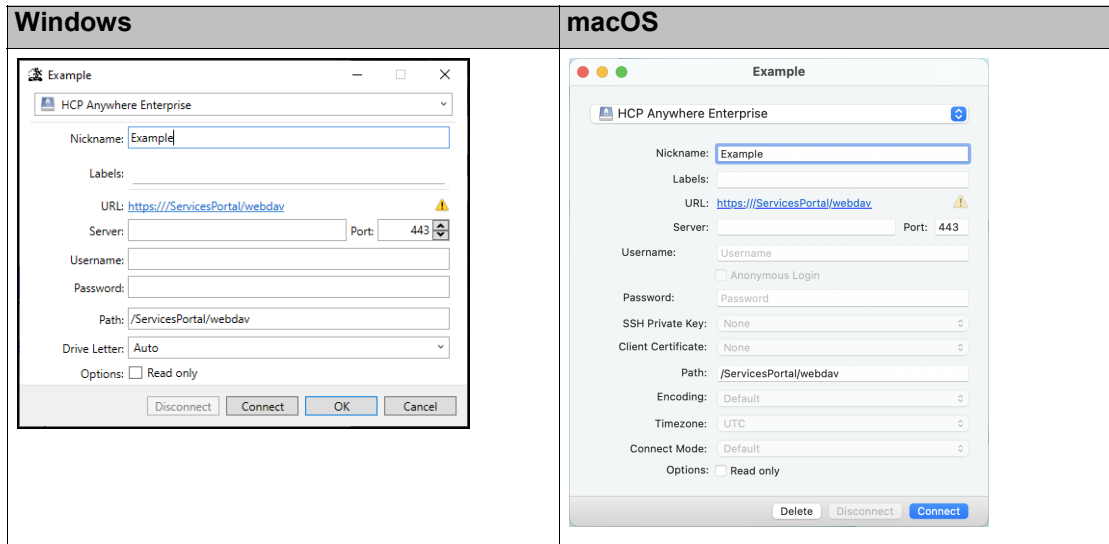
### Setting Up a New Connection

**To set up a connection to a HCP Anywhere Enterprise Portal:**

1. Click the HCP Anywhere Enterprise Drive Connect icon.  
The HCP Anywhere Enterprise Drive Connect menu is displayed.

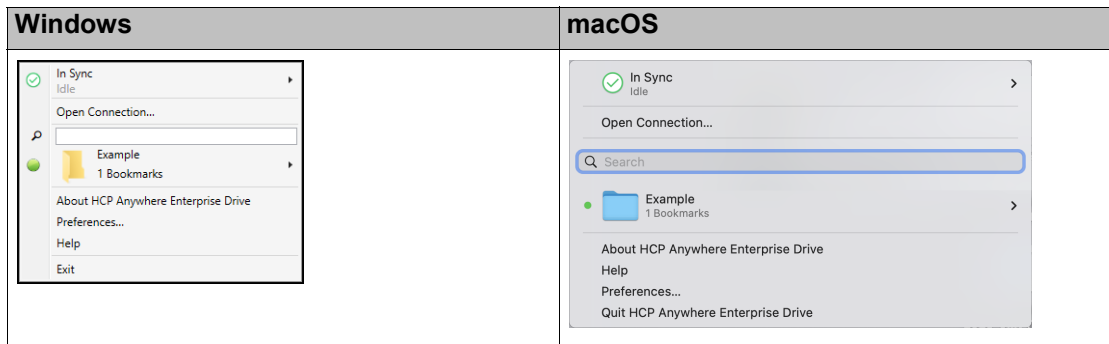


2. Click **Open Connection**.

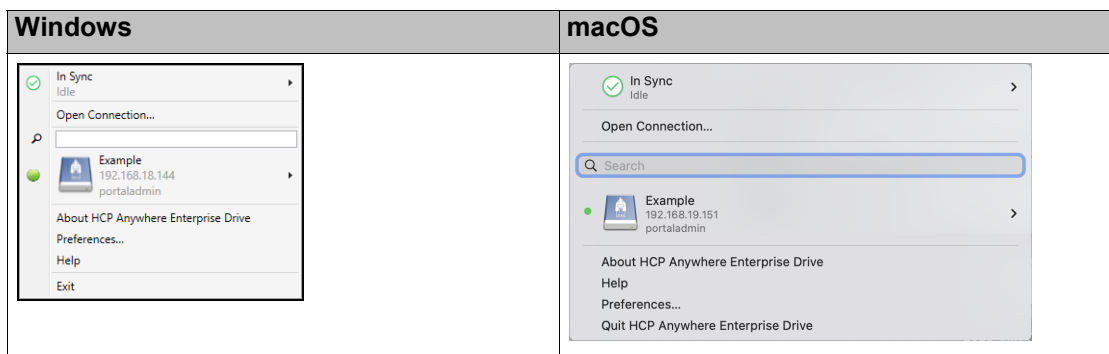


3. Enter the information to connect to the HCP Anywhere Enterprise Portal.

**Nickname** – A name to identify the portal. you can connect to more than one HCP Anywhere Enterprise Portal, each with its own unique nickname.  
**Labels** – An optional label to identify the connection in the connection. If a label is specified, the connection is saved in the HCP Anywhere Enterprise Drive Connect menu as a bookmark.



If a label is not specified:



If you use the same label for different connections, all the connections are grouped under the bookmark.

**Note:** Refer to [Using an Existing Connection](#) to see how connecting to a HCP Anywhere Enterprise Portal depends on whether a bookmark is defined.

**Server** – The full name or IP address of the HCP Anywhere Enterprise Portal.

**Port** – The port to use to connect to the HCP Anywhere Enterprise Portal.

**Username** – The username to access the HCP Anywhere Enterprise Portal.

**Password** – The password for the username to access the HCP Anywhere Enterprise Portal.

**Path** – The path to access the HCP Anywhere Enterprise Portal: **/ServicesPortal/webdav**.

**Options** – Whether the connection is read only or read/write access. The default is read/write. Check **Options** to set the connection as read only.

**macOS settings only:**

**SSH Private Key** – This feature is currently not supported.

**Client Certificate** – This feature is currently not supported.

**Encoding** – This feature is currently not supported.

**Timezone** – This feature is currently not supported.


**Windows setting only:**

**Drive Letter** – The drive letter to use to map the HCP Anywhere Enterprise Portal cloud drive in Windows File Explorer.

4. Click **Connect** to both save the connection settings and connect to the HCP Anywhere Enterprise Portal.

**Windows:** If you close the connection window or click **OK** or **Cancel**, a connection is created, even if you did not specify any connection details.

**macOS:** If you close the connection window, a connection is created, even if you did not specify any connection details. If you click **Delete**, you are prompted to delete the connection, as described in [Deleting a Connection](#).

Connected portals and bookmarked portals in the menu are displayed with a green icon, or if sync is paused or another HCP Anywhere Enterprise Drive Connect process is running, with an orange icon, .

**Note:** If the portal is configured so that it is only accessed using single sign-on, a web page opens in your browser to allow access.


**Windows:** File Explorer opens displaying the HCP Anywhere Enterprise Portal cloud drive. If you close the connection window or click **OK** or **Cancel**, a connection is created, even if you did not specify any connection details.

**macOS:** Finder opens displaying the HCP Anywhere Enterprise Portal cloud drive. If you close the connection window, a connection is created, even if you did not specify any connection details. If you click **Delete**, you are prompted to delete the connection.

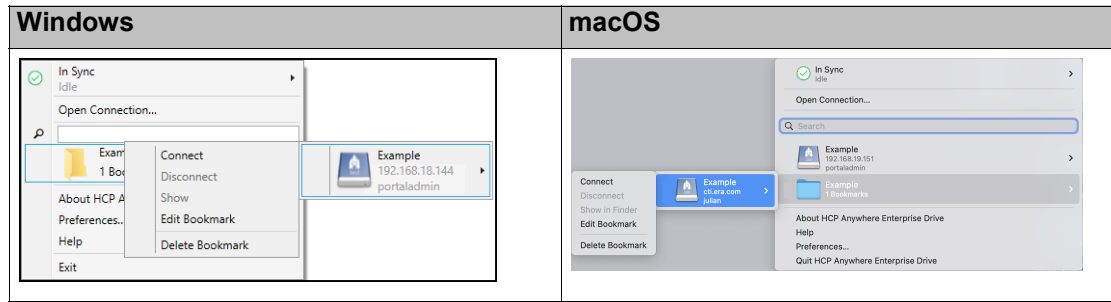
If **Save Workspace** is checked in **Preferences > General**, connections to HCP Anywhere Enterprise Portal are reopened even if you close HCP Anywhere Enterprise Drive Connect.

## Using an Existing Connection

**To connect to a HCP Anywhere Enterprise Portal Using an Existing Connection:**

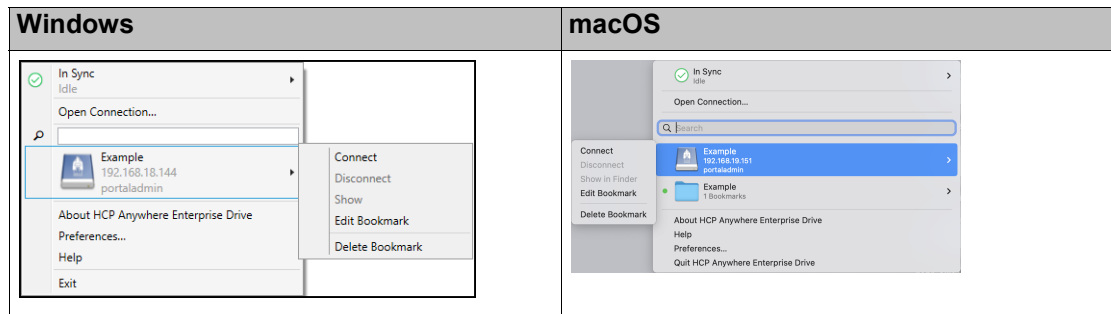
1. Click the HCP Anywhere Enterprise Drive Connect icon.  
The HCP Anywhere Enterprise Drive Connect menu is displayed.
2. Hover over the bookmark in the list, that does not have a connection icon,  or , at the side, and click **Connect** from the popup menu.

With a label defined for the connection:



**Note:** If you have more than one connection under the bookmark, clicking the bookmark lists all the connections. In the above screenshots there is only one option in the bookmark.

Without a label defined for the connection:



**Windows:** File Explorer opens displaying the HCP Anywhere Enterprise Portal cloud drive.

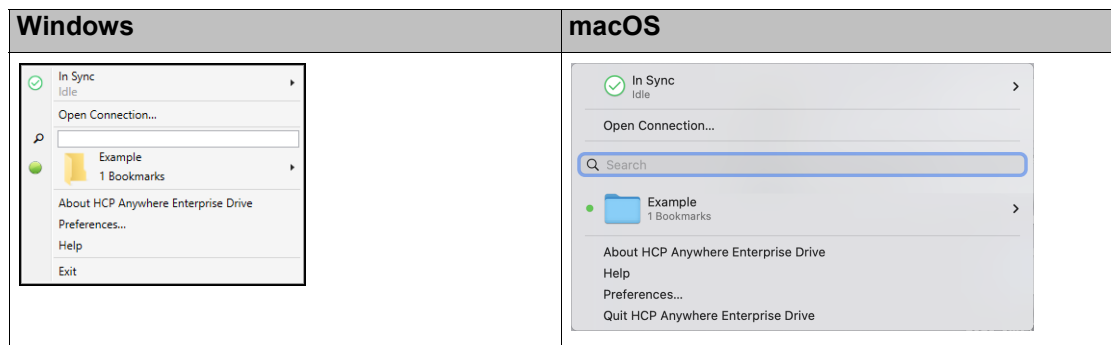
**macOS:** Finder opens displaying the HCP Anywhere Enterprise Portal cloud drive.

## Disconnecting From a HCP Anywhere Enterprise Portal

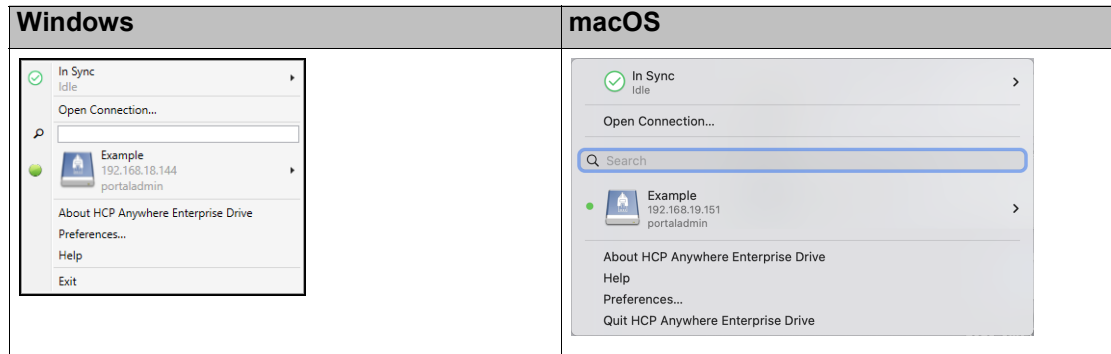
Disconnecting from a HCP Anywhere Enterprise Portal breaks the connection. This is not the same as exiting HCP Anywhere Enterprise Drive Connect which keeps the connection s to HCP Anywhere Enterprise Portals.



**To disconnect from a HCP Anywhere Enterprise Portal:**

1. Click the HCP Anywhere Enterprise Drive Connect icon.  
The HCP Anywhere Enterprise Drive Connect menu is displayed.



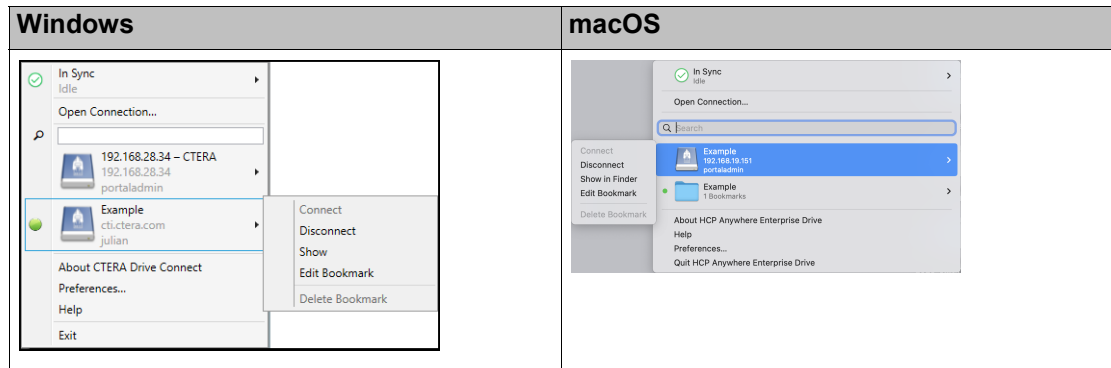
If a label is not specified:



2. Hover over the connection, or the connection in the bookmark list, that has a connection icon,  or , at the side, and click **Disconnect** from the popup menu.



If a label is not specified.



**Note:** You can also disconnect from the portal from the connection window.

# Editing a Connection Bookmark

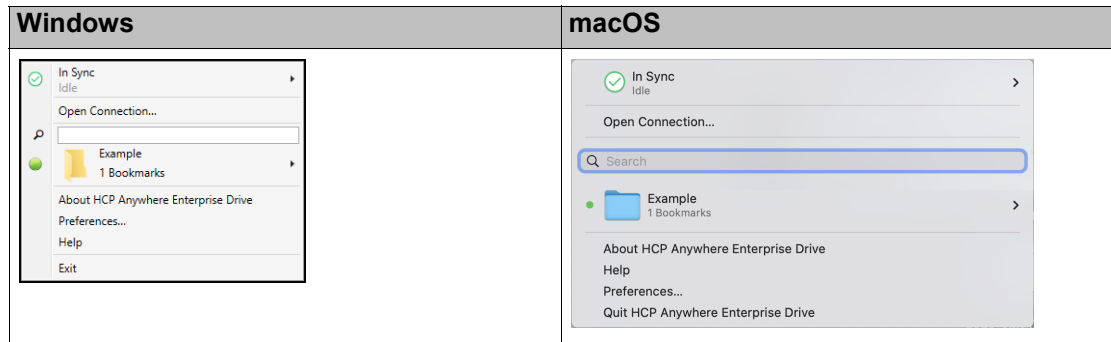
You can only edit the properties of a bookmark.

## To edit a bookmark:

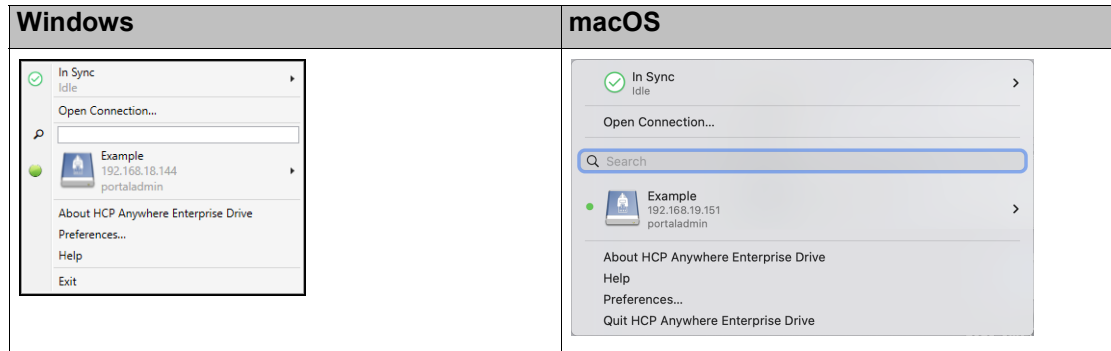
1. Click the HCP Anywhere Enterprise Drive Connect icon.

The HCP Anywhere Enterprise Drive Connect menu is displayed.

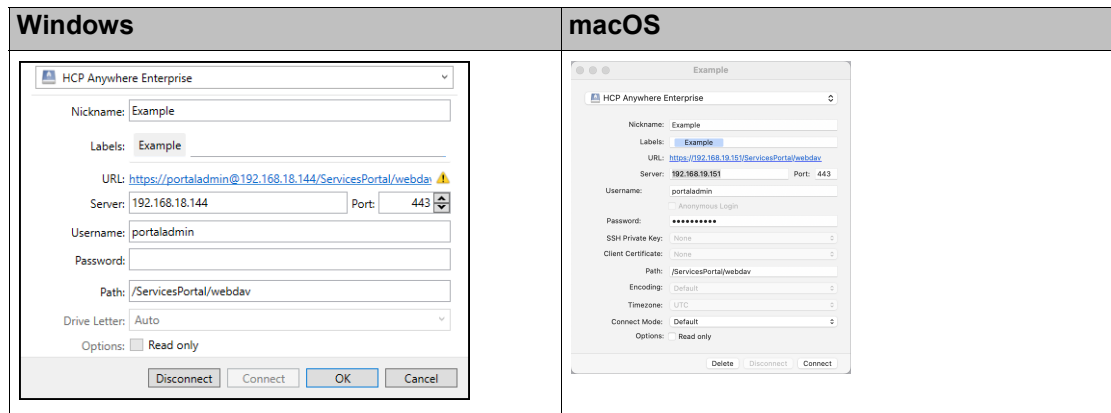
Hover over the bookmark in the list and click **Edit Bookmark** from the popup menu.



If a label is not specified:



The connection window is displayed.



2. Make the changes you want, for example, change a label. For details, see [Connecting To a HCP Anywhere Enterprise Portal](#).

**Note:** You can also disconnect from the portal from the connection window.

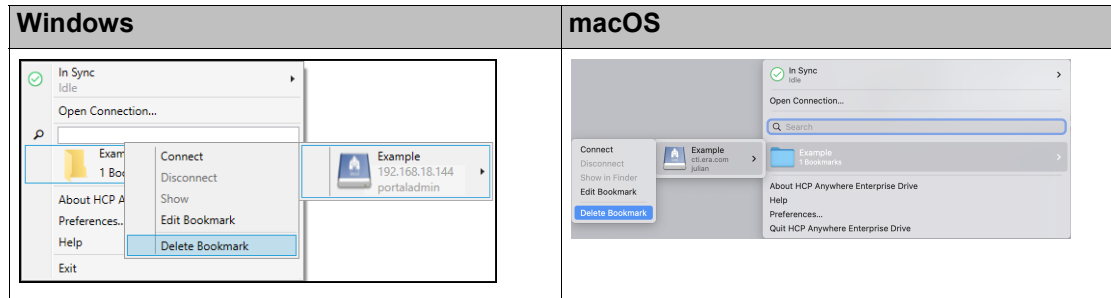
## Deleting a Connection

You can only delete a connection from HCP Anywhere Enterprise Drive Connect when HCP Anywhere Enterprise Drive Connect is not connected to the HCP Anywhere Enterprise Portal for that connection.

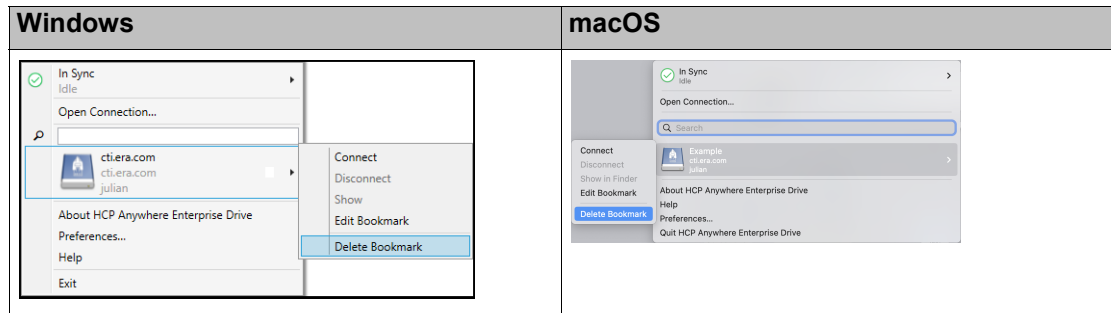
### To delete a connection from HCP Anywhere Enterprise Drive Connect:

1. Click the HCP Anywhere Enterprise Drive Connect icon.  
The HCP Anywhere Enterprise Drive Connect menu is displayed.
2. If the connection between HCP Anywhere Enterprise Drive Connect and the portal is connected, you must first click **Disconnect** to close the connection.

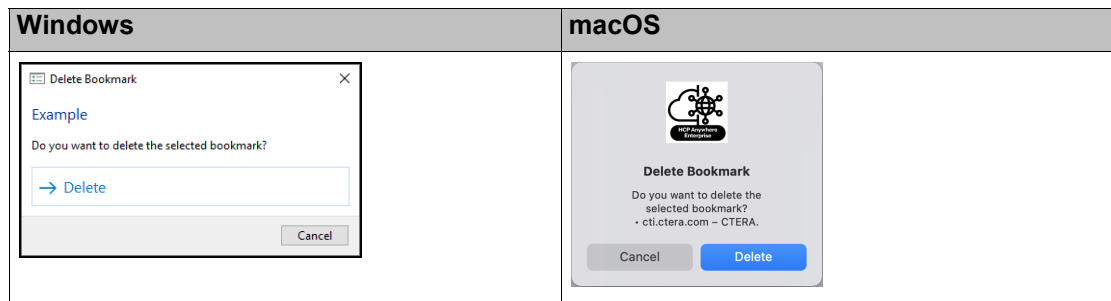
Hover over the connection, or the connection in the bookmark list, and click **Delete Bookmark** from the popup menu.



If a label is not specified.



The **Delete Bookmark** window is displayed.



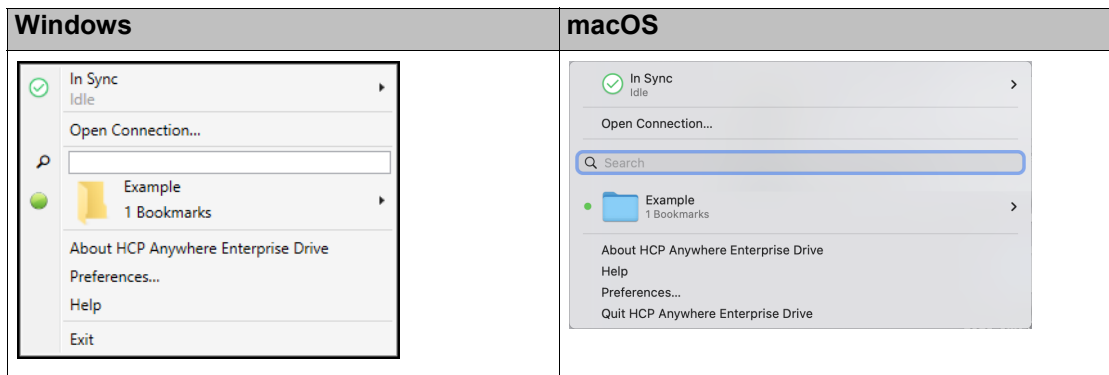
3. Click **Delete**.

# Chapter 6. Configuring HCP Anywhere Enterprise Drive Connect Preferences

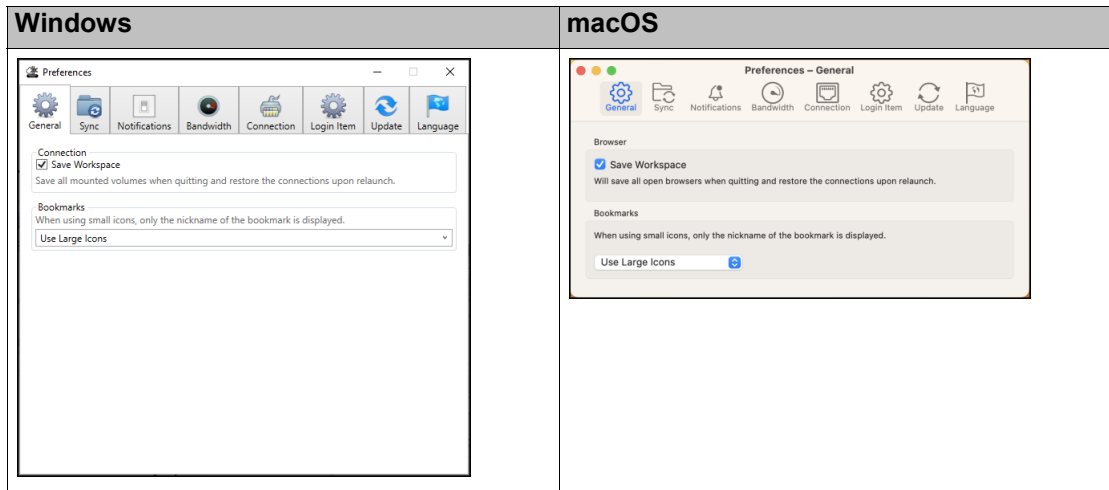
HCP Anywhere Enterprise Drive Connect preferences enable you to configure such things as the maximum bandwidth to use between the PC and the HCP Anywhere Enterprise Portal for downloads and uploads and the HCP Anywhere Enterprise Drive Connect user interface language.

## To set preferences:

1. Click the HCP Anywhere Enterprise Drive Connect icon.  
The HCP Anywhere Enterprise Drive Connect menu is displayed (with a label).



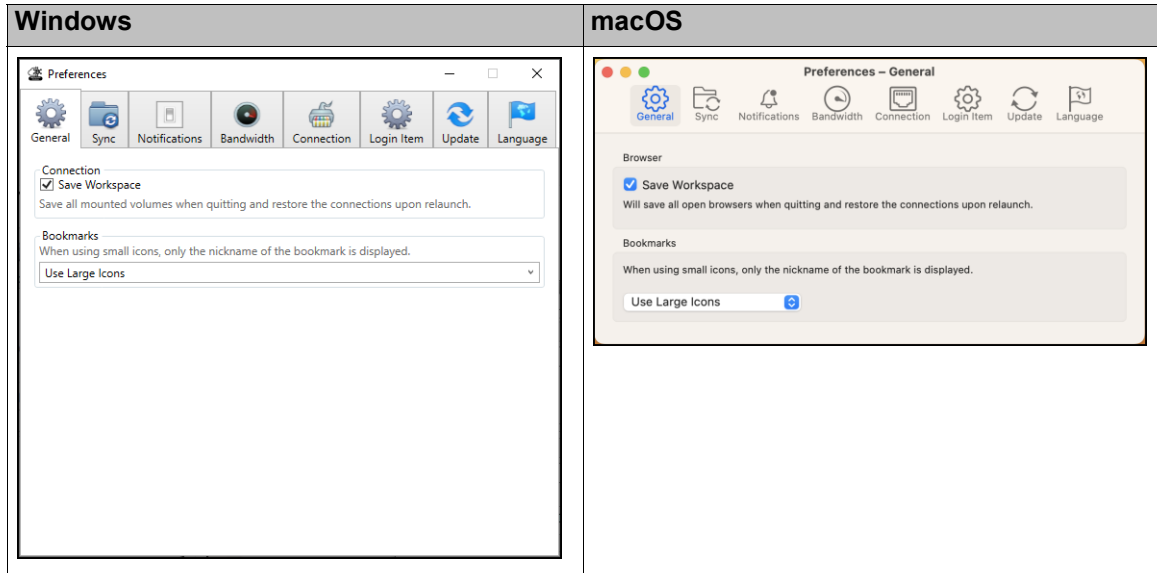
2. Click **Preferences**.  
The **Preferences** window is displayed.



3. Click the option you want.
  - [General Settings](#)
  - [Sync Settings](#)
  - [Notifications Settings](#)
  - [Bandwidth Settings](#)
  - [Connection Settings](#)
  - [Login Item Settings](#)

- [Update Settings](#)
- [Language Settings](#)

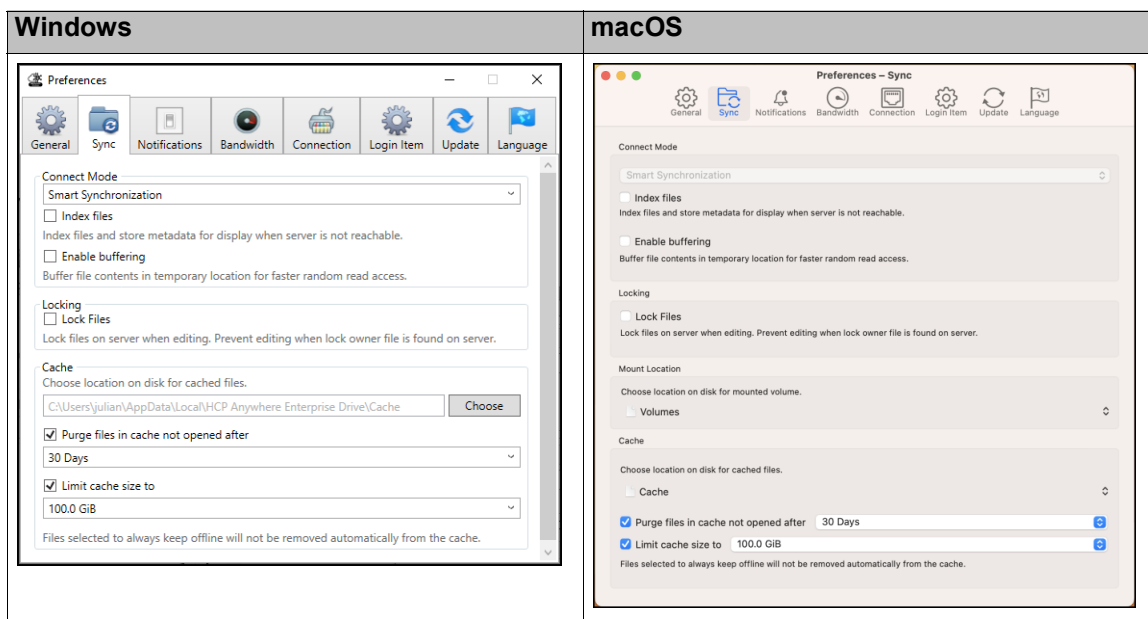
## General Settings



### To set the general preferences:

1. In the **Preferences** window, click **General**.
  2. Define your preferences.
    - Define your **Connection** preference.  
**Save Workspace** – All mounted volumes are saved. After exiting or upgrading HCP Anywhere Enterprise Drive Connect, the connection information is saved and restored when HCP Anywhere Enterprise Drive Connect is reopened. HCP Anywhere Enterprise recommends keeping this option checked for consistent data access.
    - Define your **Bookmarks** preference.  
The size of the icons in the HCP Anywhere Enterprise Drive Connect user interface. Hitachi Vantara recommends setting Bookmarks to *Use Large Icons* to make selection easier.
- Note:** The size of the icons selected only applies to how the icons are displayed in the HCP Anywhere Enterprise Drive Connect user interface and not in Windows File Explorer nor macOS Finder.

# Sync Settings



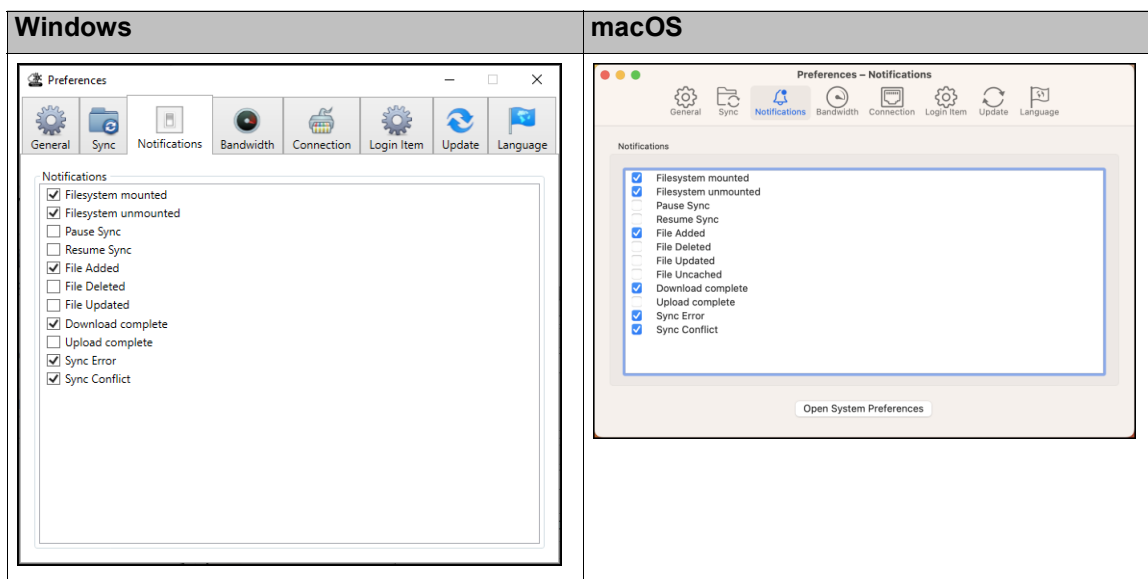
## To set the sync preferences:

1. In the **Preferences** window, click **Sync**.
2. Define your **Connect Mode** preferences.

**Note:** The **Connect Mode** preference is fixed as **Smart Synchronization**: Opened files and files marked **Keep Offline on Local Disk**, via the right-click menu in Windows File Explorer or macOS Finder, are copied to the local cache on the PC and can be accessed even when there is no connection to the portal. Hitachi Vantara recommends setting this option.

- Check **Index files** to automatically check for changes to the files every ten minutes.
  - Check **Enable buffering** for faster access to buffer file contents in a temporary location which is deleted when quitting HCP Anywhere Enterprise Drive Connect. Unchecking Enable cache only affects the online cache not the sync cache.
3. **Locking** – This feature is currently not supported.
  4. For macOS only, specify the **Mount Location**. Volumes are mounted in the Volumes folder in the application support directory. You can change the default to an other folder that is writable.
  5. Define your **Cache** preferences. Specify the Cache location if you want the cache on an external drive.
    - **Windows:** The external drive must be an NTFS formatted drive with support for NTFS ADS (Alternate Data Stream).
    - **macOS:** The external drive must be an HFS+ or APFS formatted drive.
- Purge files in cache not opened after** – How long a file that is not opened remains in the cache before being evicted.
- Limit cache size to** – How big the cache size is. When the cache gets to be too full, the largest files that are not marked **Keep Offline on Local Disk**, via the right-click menu in Windows File Explorer or macOS Finder, are evicted first until the used storage is less than the specified cache size. Hitachi Vantara recommends keeping this option as 100GB.

# Notifications Settings



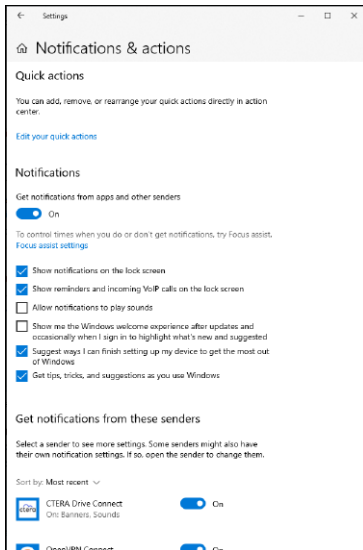
## To set the notifications preferences:

1. In the **Preferences** window, click **Notifications**.
2. Specify the **Notifications** you want to receive.
  - **Filesystem mounted** – Notify when the volume is now connected.
  - **Filesystem unmounted** – Notify when the volume has been disconnected.
  - **Pause Sync** – Notify when synchronization has paused due to the server not being reachable because of a network or login error.
  - **Resume Sync** – Notify when synchronization has automatically resumed.
  - **File Added** – Notify when a new file has been found on the server that was not previously synced.
  - **File Deleted** – Notify when a file that was synced has been deleted on the server.
  - **File Updated** – Notify when a synced file has been updated on the server.
  - **File Uncached** (macOS version only) – Notify when a file previously cached for offline access has been evicted from the cache.
  - **Download complete** – Notify when a file download has completed in the background.
  - **Upload complete** – Notify when a file upload has completed in the background.
  - **Sync Error** – Notify when there is an error synchronizing a file because of a server error response.
  - **Sync Conflict** – Notify when users simultaneously edit the same file. The last file saved is the file that is stored with the original file name and the other user changes are saved in a file with the same name but including a timestamp as part of the name.

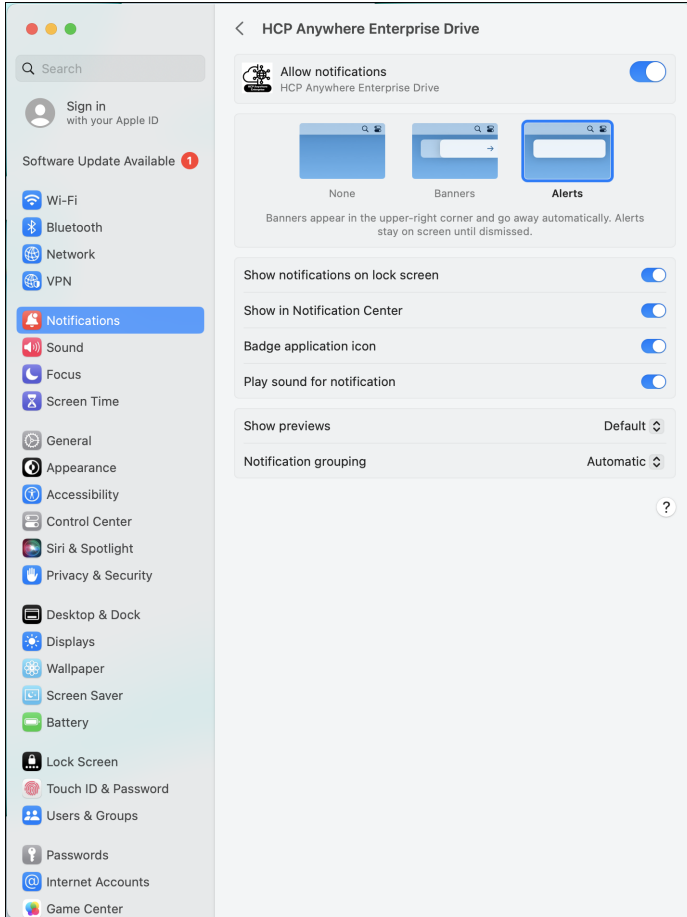
## Configuring Notifications at the Operating System Level

You can configure notifications settings at the operating system level, so any notification settings in the HCP Anywhere Enterprise Drive Connect **Preferences** are ignored.

**Windows:** Go to **Settings > System > Notifications & Actions** and set how you want notifications handled.

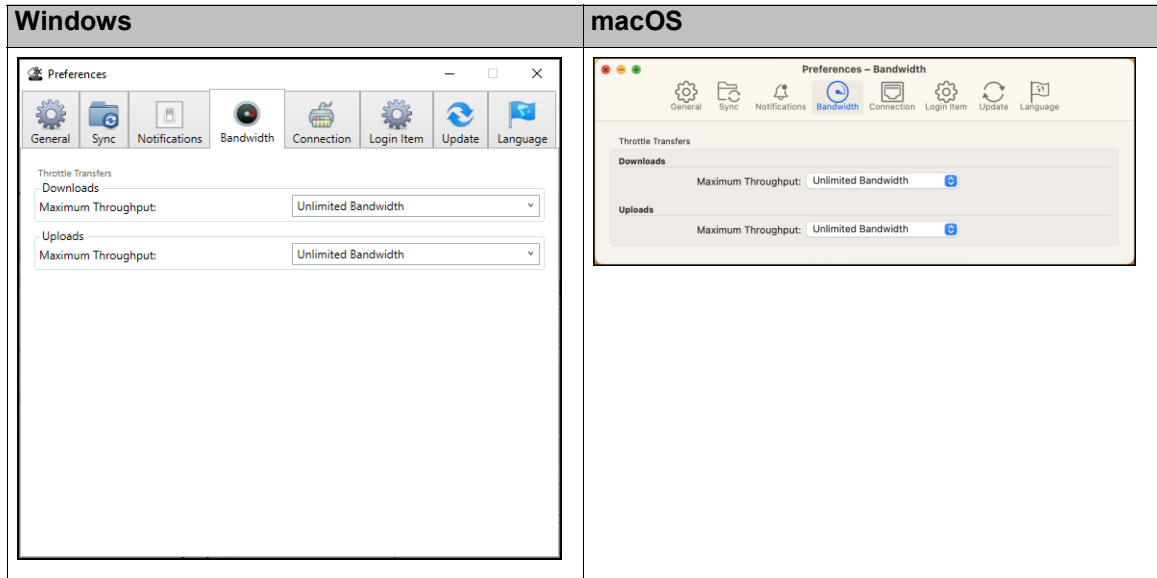


**macOS:** Click **Open System Preferences** and choose **Notifications**. In the **Notifications** window that is displayed click **HCP Anywhere Enterprise Drive Connect** to set how you want notifications handled.



**Note:** If no notifications are checked in the HCP Anywhere Enterprise Drive Connect Preferences, Hitachi Vantara recommends that notifications **are** enabled at the operating system level.

# Bandwidth Settings

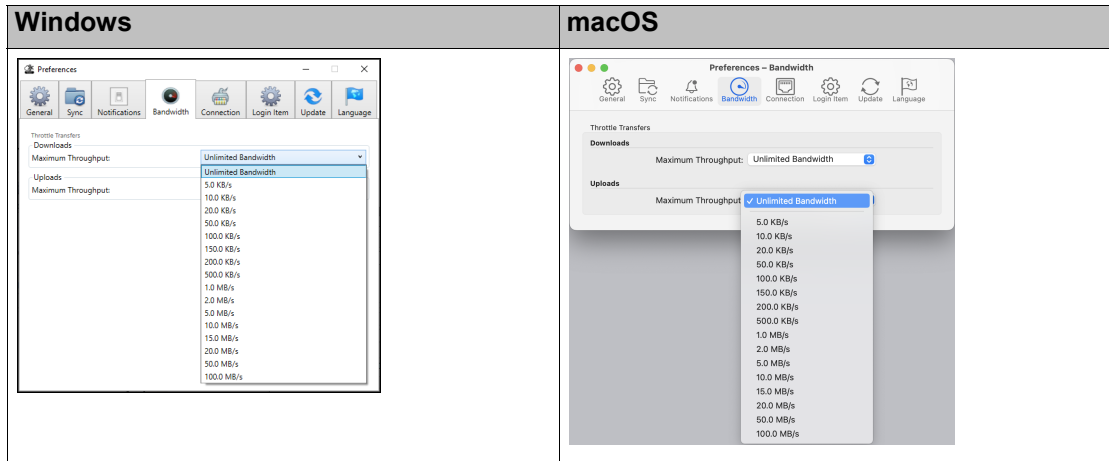


You can limit the cloud sync upload and download speeds to maximize bandwidth utilization.

## To set the bandwidths:

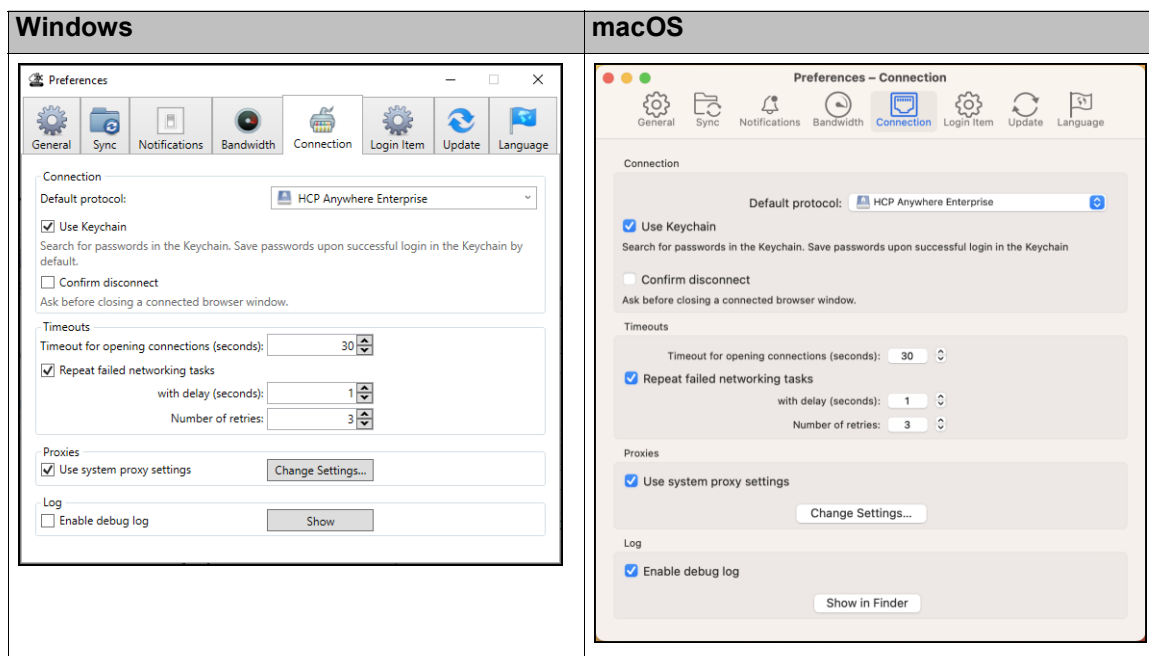
1. In the **Preferences** window, click **Bandwidth**.
2. For both **Downloads** and **Uploads** click the relevant **Maximum Throughput** drop-down box.

A list of bandwidths is displayed.



3. Select the bandwidth you want. If there are no other bandwidth considerations, keep the bandwidth unlimited.

# Connection Settings



You can specify connection settings for HCP Anywhere Enterprise Drive Connect, such as proxy settings.

## To set the connection settings:

1. In the **Preferences** window, click **Connection**.  
The **Default protocol** to access the portal is **HCP Anywhere Enterprise Portal**. This protocol cannot be changed.
2. Define your preferences.

**Connection** – The settings to use when connecting to a HCP Anywhere Enterprise Portal.

- **Use Keychain** – Save login credentials upon successful login.

**Windows:** In the Credential Manager.

**macOS:** In Keychain Access.

- **Confirm disconnect** – Prompt before closing a connected window.

**Timeouts** – The amount of time to wait before ending the action.

- **Timeout for opening connections (seconds)** – The number of seconds to allowed to connect to a HCP Anywhere Enterprise Portal before ending the connection attempt. For high latency networks with a low bandwidth, Hitachi Vantara recommends changing the default setting to 30.

- **Repeat failed networking tasks** – The number of times to retry a failed network task. Hitachi Vantara recommends always keeping this option checked.

**with delay (seconds)** – The number of seconds to wait before retrying the network task.

**Number of retries** – The number of retries before ending the attempts. Hitachi Vantara recommends changing the number of retries to 3 when the network is not stable.

**Proxies** – Either accept the default system proxy settings or click **Change Settings**.

- **Windows:** The **Connections** tab in the **Internet Properties** window is displayed.

- **macOS:** Search for **Proxies**, or choose **Wi-Fi**, click **Details** for the connection and **Proxies** in the navigation pane, and set how you want proxies handled.

Specify the settings you require.

**Log** – Check **Enable debug log** to include debug information in the driveconnect.log file. The following logs are available:

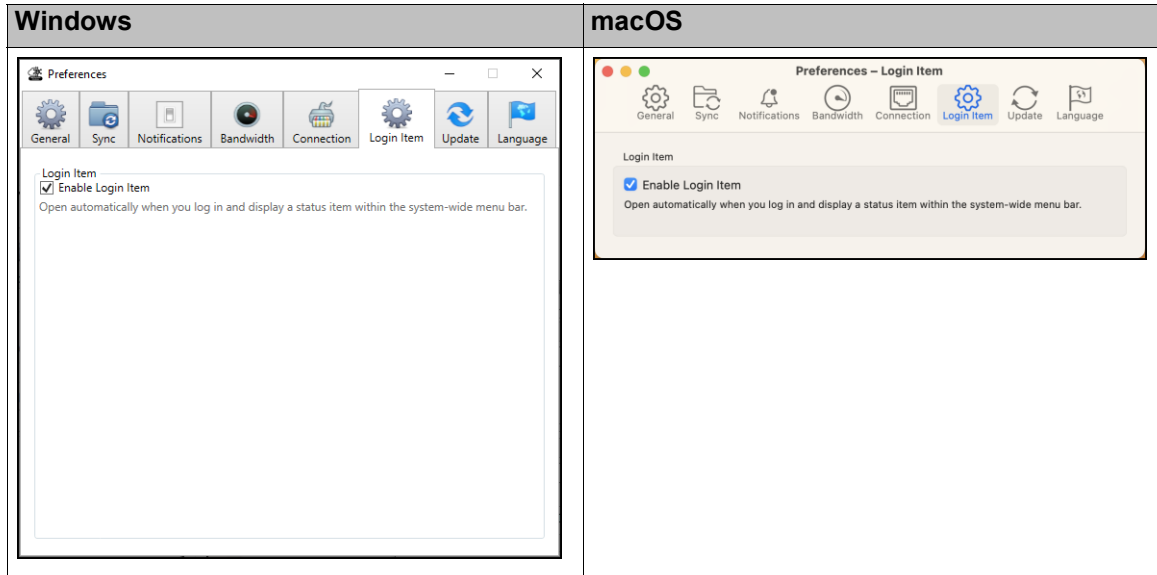
- driveconnect.dmp
- driveconnect.errors
- driveconnect.log

**Note:** Hitachi Vantara recommends not to check this option unless you encounter issues with performance.

**Windows:** Click **Show** to display the log file directory in Windows File Explorer.

**macOS:** Click **Show in Finder** to display the log file directory in Finder.

## Login Item Settings

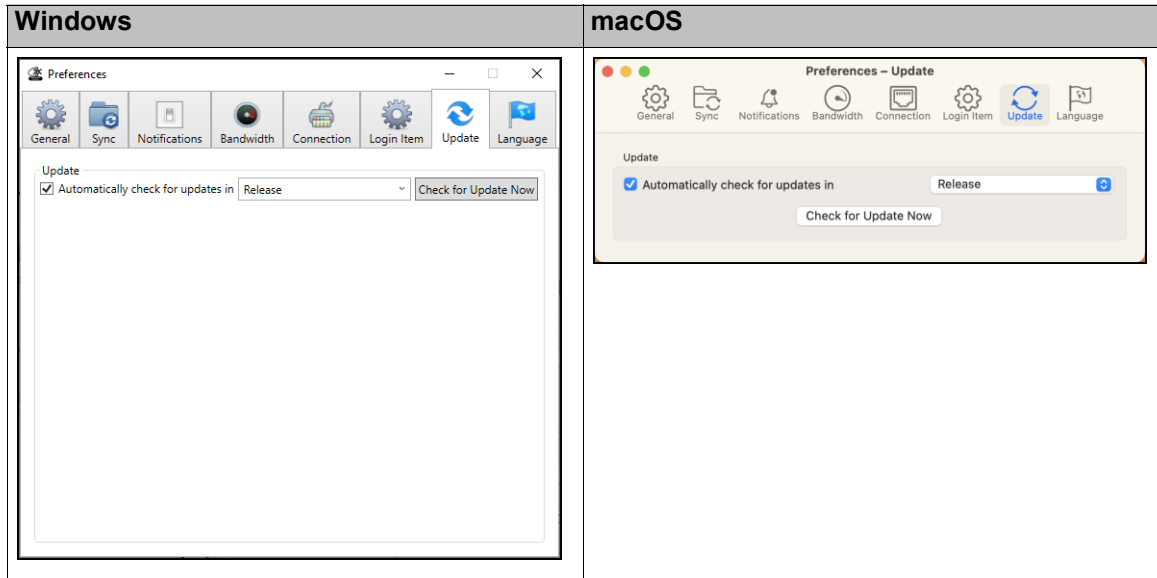


You can specify whether or not to automatically start HCP Anywhere Enterprise Drive Connect when logging in to the PC.

Define your **Login Item** preference:

- **Enable Login Item** – Automatically start HCP Anywhere Enterprise Drive Connect when logging in to the PC.

# Update Settings



You can set HCP Anywhere Enterprise Drive Connect to automatically check for new versions, by checking **Automatically check for updates** in the **Update** window.

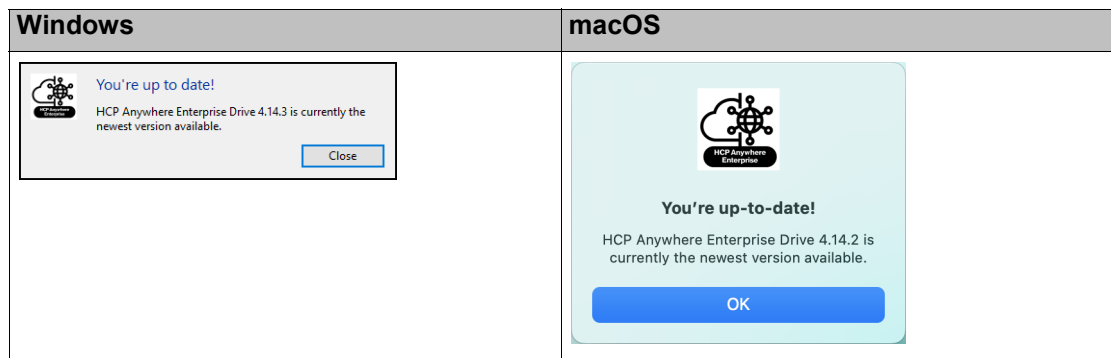
Check **Automatically check for updates in** to get an update prompt whenever a new version of HCP Anywhere Enterprise Drive Connect is available.

**Note:** If you do not check **Automatically check for updates in**, you have to manually check for updates.

## To check for updates for HCP Anywhere Enterprise Drive Connect:

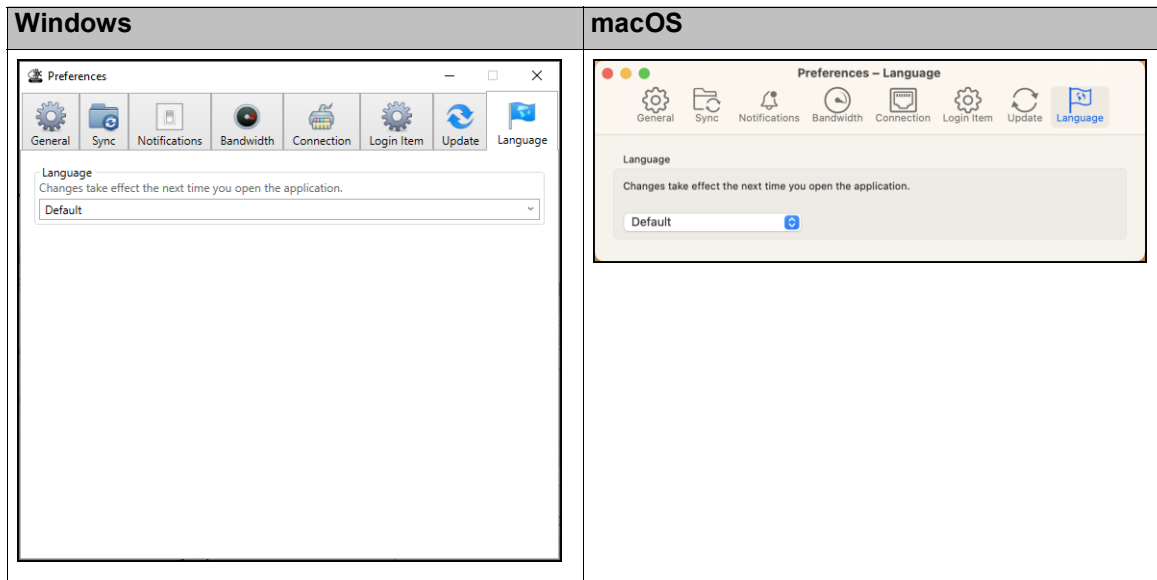
1. Click **Check for Update Now** to check if a new version of HCP Anywhere Enterprise Drive Connect is available.

**Note:** If the current version is the latest version, the You're up to date window is displayed, as in the following example.



2. To install an update, follow the instructions in [Upgrading HCP Anywhere Enterprise Drive Connect](#).

# Language Settings

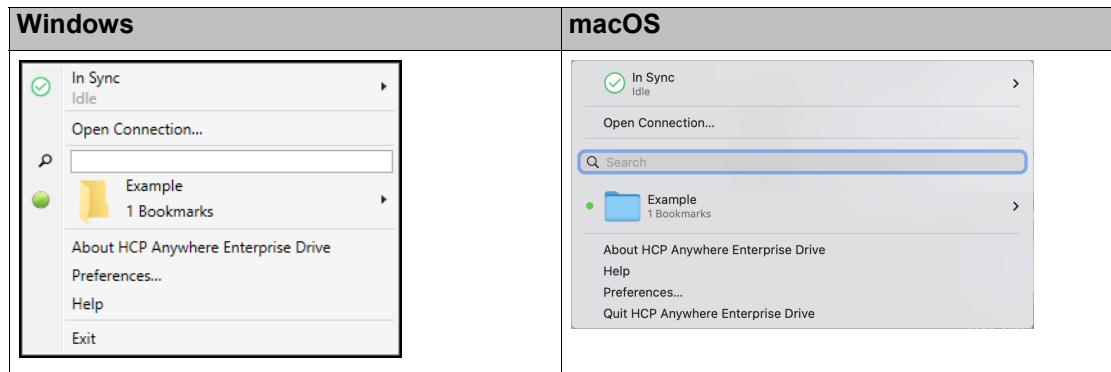


You can select the language to use for the HCP Anywhere Enterprise Drive Connect user interface from any of the language supported by the PC.

## To set the language for HCP Anywhere Enterprise Drive Connect:

1. In the **Preferences** window, click **Language**.
2. Select the language from the **Language** drop-down box.
3. Click the HCP Anywhere Enterprise Drive Connect icon.

The HCP Anywhere Enterprise Drive Connect menu is displayed (with a label).



4. Close HCP Anywhere Enterprise Drive Connect.

**Windows:** Click **Exit**.

**macOS:** Click **Quit HCP Anywhere Enterprise Drive Connect**.

5. Start HCP Anywhere Enterprise Drive Connect:

**Windows:** In **Windows search** look for HCP Anywhere Enterprise Drive Connect and click the App.

**macOS:** In Finder select **Applications** and then click **HCP Anywhere Enterprise Drive Connect** from the list.

The HCP Anywhere Enterprise Drive Connect user interface is displayed using the selected language.

---

# Chapter 7. Working With HCP Anywhere Enterprise Drive Connect

You can upload folders and files to the HCP Anywhere Enterprise Portal and securely share these folders and files with your team members or external users.

In addition, you can perform actions, such as editing, copying or moving files in the cloud using the standard Windows File Explorer or macOS Finder functionality.

You can also refresh Windows File Explorer display or reload macOS Finder to display the latest versions. Open files in Windows Explorer are refreshed every 60 seconds from the HCP Anywhere Enterprise Portal. To update the local content before 60 seconds, you can use F5 to force the update.



Also see:

- [Displaying the Cloud Drive Content](#)
- [The Right-click Menu](#)
- [Creating a Folder](#)
- [Uploading Folders and Files](#)

**Note:** A known issues with Drive Connect is that when deleting a cloud folder from Drive Connect not all the content is deleted in the portal and after a few seconds the folder is restored on the Drive Connect side.

## Displaying the Cloud Drive Content


After you have connected to the HCP Anywhere Enterprise Portal the Windows File Explorer or macOS Finder opens showing the portal Cloud Drive page.




If you closed the window, you can reopen in it: Click the *HCP Anywhere Enterprise Drive Connect* icon and hover over the connection, or the connection in the bookmark list, that has a connection icon,  or , at the side, and click **Show** (Windows) or **Show in Finder** (macOS) from the popup menu.

**Note:** Hitachi Vantara recommends setting **Bookmarks** to *Use Large Icons* in [General Settings](#).

## Icons Used with Folders and Files

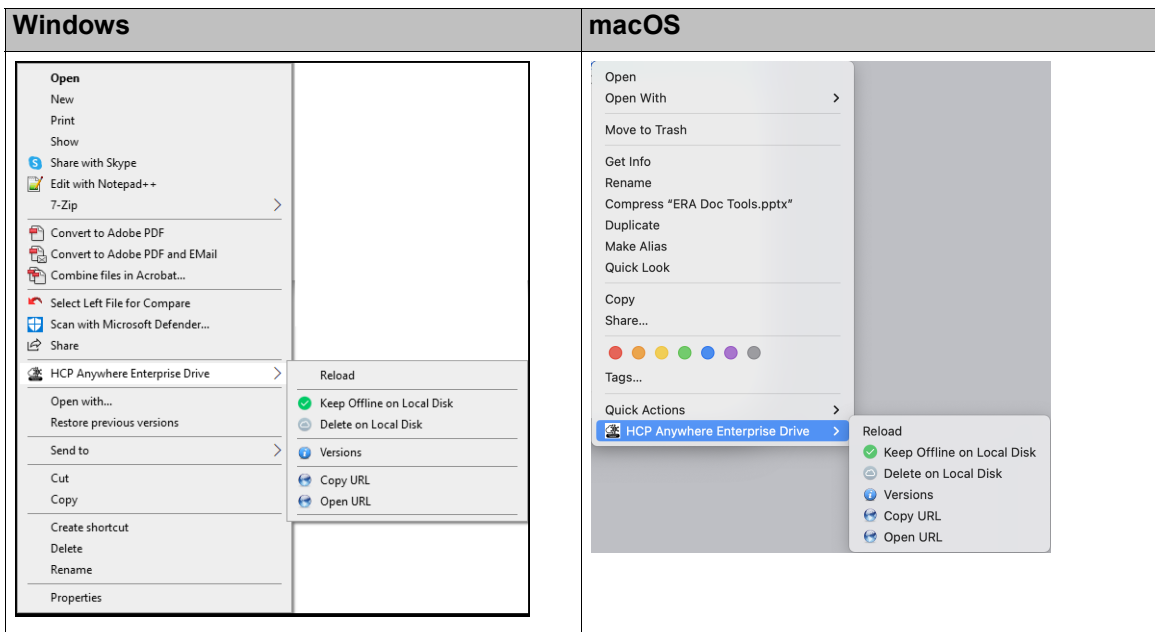
Both folders and files are marked in with an icon that identifies the status of the folder or file.

Icon	Meaning
— (no icon)	The folder or file has been downloaded to the computer.
	macOS only: The folder or file is always available locally. While connected to the portal, the file is synced with the portal, so changes are reflected both locally and on the portal.

Icon	Meaning
	The folder and files actual content are on the portal with stubs saved locally.
	The content is being synced with the portal.
	The folders and files cannot be accessed.

## The Right-click Menu

Right-clicking a folder or file displays a menu.



Where:

**Reload** – Reload contents.

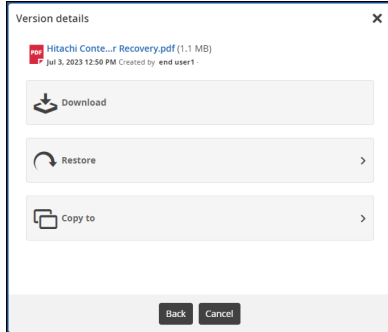
**Keep Offline on Local Disk** – Make the folder or file always available locally. While connected to the portal, the file is synced with the portal, so changes are reflected both locally and on the portal. Hitachi Vantara recommends keeping frequently used files and large files offline. The size of a file kept offline is not included in the cache size limit, specified in [Sync Settings](#).

**Delete on Local Disk** – Delete the folder and files locally, so that they can be accessed from the portal with stubs saved locally. Hitachi Vantara recommends using this option on files that are offline and when the work on that file has been completed.

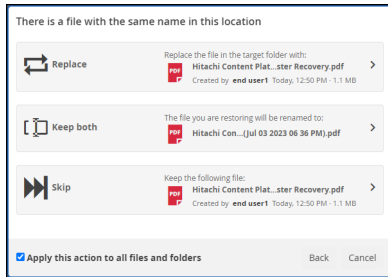
**Versions** – The portal is opened with the **Versions of filename** window displayed, listing the different versions that exist for the file.



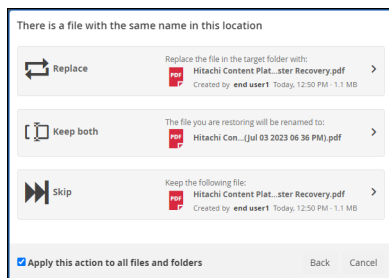
Click the version you want to restore and the **Version details** window is displayed.



Depending on the type of file, you can do the following:



- Download the selected file version.
- Open the selected file version, to view it and decide if it is the file you want to restore.
- You can restore the file by:
  - Replacing the current version with this older version.
  - Keeping the current version and restoring the older version with a new name: the file name followed by the original date of the file.
  - Skipping restoring the older file.



- Copy the selected version to another location.

**Copy URL** – Copies the URL to the clipboard for use to open the folder in the portal or the file in the portal preview server.

**Open URL** – Opens the folder in the portal or the file in the portal preview server.

**Note:** You need to be logged in to the portal to use the **Copy URL** and **Open URL** options.

## Creating a Folder

After you have connected to the HCP Anywhere Enterprise Portal the Windows File Explorer or macOS Finder opens showing the portal Cloud Drive page. You can create new folders that are then synced to the portal.

You **must** change the name of a new folder from the default name for the folder to be synced with the portal.

The default name for a Windows Explorer folder is *New Folder*.

The default name for a macOS Finder folder is *untitles folder*.

## Uploading Folders and Files

You can upload folders and files by dragging and dropping them.

**To upload folders or files to the portal:**

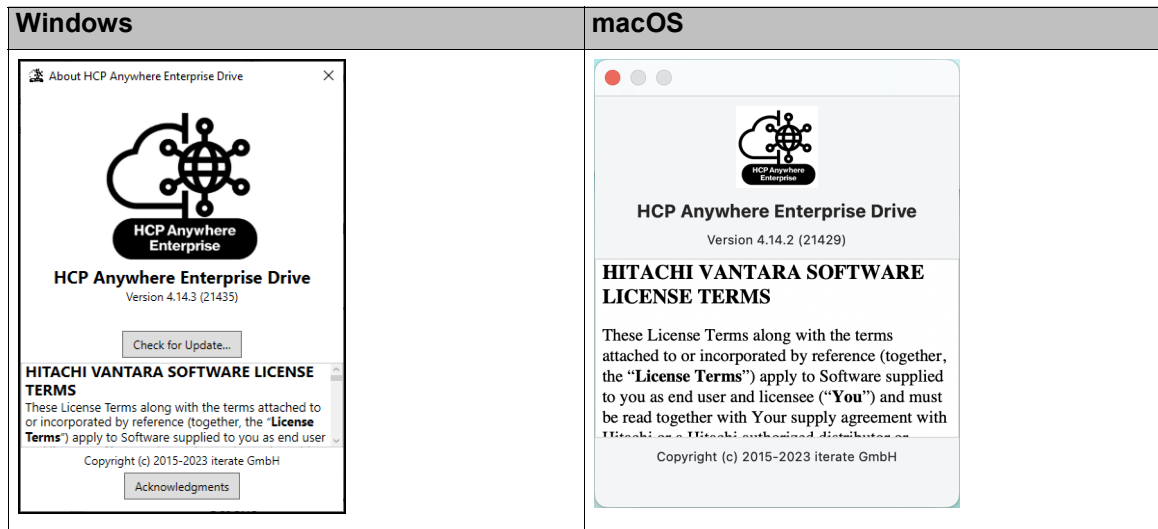
1. In HCP Anywhere Enterprise Drive Connect go to the folder where you want the uploaded content.
2. In Windows Explorer or macOS Finder go to the folder with the content to upload.
3. Copy-and-paste or drag-and-drop the content from Windows Explorer or macOS Finder to HCP Anywhere Enterprise Drive Connect.

**Note:** Avoid copy-and-paste or drag-and-drop on large files.

# Chapter 8. Upgrading HCP Anywhere Enterprise Drive Connect

Hitachi Vantara is constantly improving HCP Anywhere Enterprise Drive Connect. From time to time a new version is released with bug fixes and other improvements.

You can check the current version you have installed by clicking **About HCP Anywhere Enterprise Drive** in the menu.

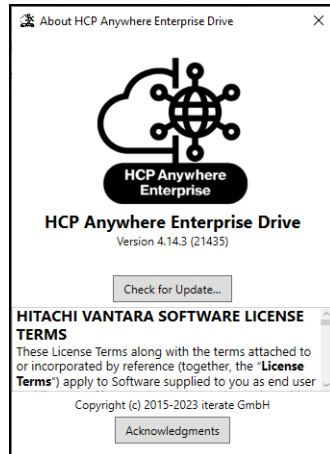


If **Automatically check for updates** checkbox is checked in **Preferences > Update**, you are notified when a new version is available.

**Note:** You can also manually check for updates: Click the HCP Anywhere Enterprise Drive Connect icon.

- i The HCP Anywhere Enterprise Drive Connect menu is displayed.
- ii Click **Preferences > Update**.
- iii Click **Check for Update Now** to check if a new version of HCP Anywhere Enterprise Drive Connect is available. If a new version is available, the new version window is displayed. If the current version is the latest version, the **You're up to date** window is displayed.

In Windows, you can also check for updates by clicking **About HCP Anywhere Enterprise Drive** in the menu and then **Check for Update**.



You do not have to install the latest version, **Skip this version**, or, in Windows, you can decide to install it at a later date, **Remind me later**.

**To install the latest version:**

When a new version of HCP Anywhere Enterprise Drive Connect is available the **Software Update** window is displayed:

1. Click **Install update** to install the latest version.  
The software is downloaded to your computer.
2. After the download has completed, click:

**Windows: Install update.**

**macOS: Install and Relaunch.**

The Installation starts.

In **Windows** you can change the application location:

- a) Click **Options** to change the location where HCP Anywhere Enterprise Drive Connect is installed.  
The **Setup Options** window is displayed.  
Either keep the default location or specify a new location and click **OK**.
- b) Click **Install**.
- c) At the end of the upgrade a successfully completed window is displayed.
- d) If requested, restart the PC, or if the PC does not need to be restarted, restart HCP Anywhere Enterprise Drive Connect: In **Windows search** look for HCP Anywhere Enterprise Drive Connect and click the App.

The HCP Anywhere Enterprise Drive Connect application starts. If **Save Workspace** is checked in **Preferences > General**, connections to HCP Anywhere Enterprise Portal are reopened.

## Hitachi Vantara

Corporate Headquarters 2535 Augustine Drive  
Santa Clara, CA 95054 USA [www.HitachiVantara.com](http://www.HitachiVantara.com) [community.HitachiVantara.com](http://community.HitachiVantara.com)

### Regional Contact Information

Americas: +1 866 374 5822 or [info@hitachivantara.com](mailto:info@hitachivantara.com)

Europe, Middle East and Africa: +44 (0) 1753 618000 or [info.emea@hitachivantara.com](mailto:info.emea@hitachivantara.com)

Asia Pacific: +852 3189 7900 or [info.marketing.apac@hitachivantara.com](mailto:info.marketing.apac@hitachivantara.com)

