

# VSP One Block: Monitor and Optimize Storage System Health from Anywhere

Hitachi Virtual Storage Platform 360 Clear Sight (VSP 360 Clear Sight) is a user-friendly, cloud-based monitoring and management software that provides critical insights into your Hitachi storage assets. It uses Hitachi Remote Ops for automated, proactive data collection to identify equipment requirements in advance and create an efficient mitigation plan. AI-driven insights powered by Hitachi Remote Ops give an on-demand, single-source view of operational and business metrics for Hitachi storage using artificial intelligence and machine learning.

Get started with these simple steps to safeguard your storage system.



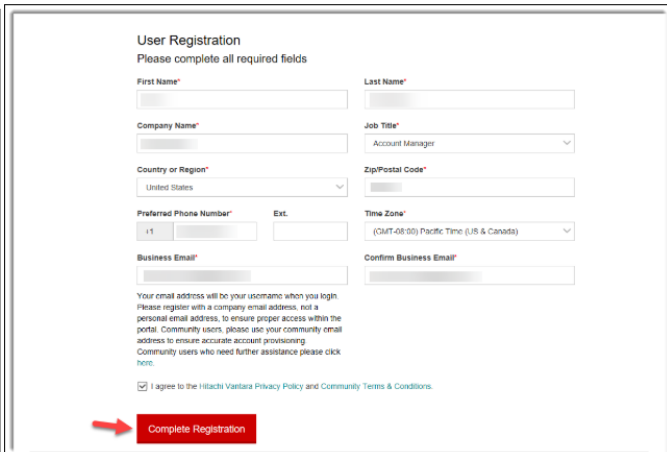
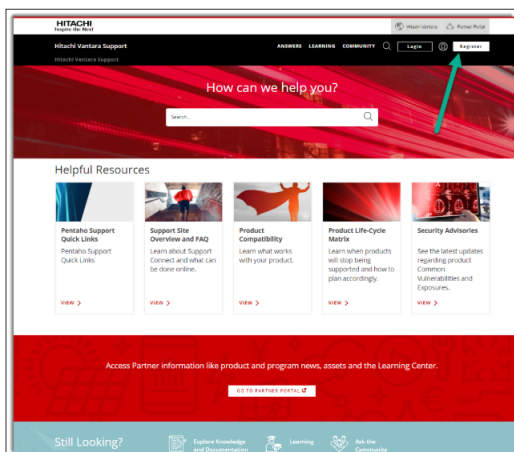
## Step 1: Register with Hitachi Vantara Support

Register with Support to submit service requests, view product information, and contact technical support.

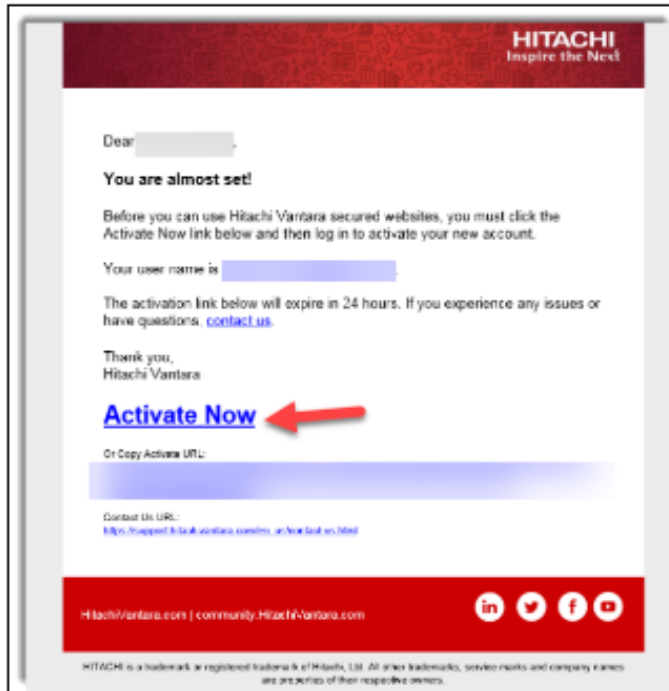
1. Locate the product serial number on the rear of the controller.



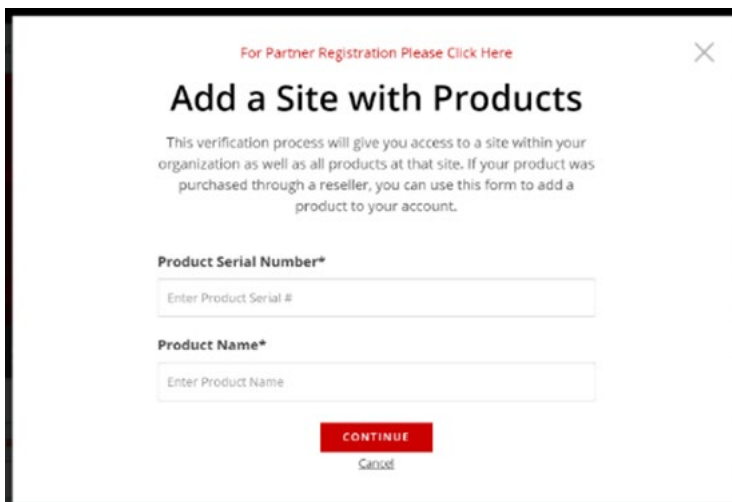
2. Open a web browser on your PC or mobile device.
3. Go to <https://support.hitachivantara.com>.
4. Click **Register** in the upper-right corner.



5. Follow the prompts to provide your information and agree to the terms at the bottom by selecting the checkbox. Click **Complete Registration**.
6. Check your email and click the activation link.



7. Enter a **New Password**, enter the password again to confirm, and then click **Submit**.
8. From the login page, enter your **Username** and **Password**, and then click **Sign In** to access your Support site account.
9. In the product verification menu, enter the **Product Serial Number**, select the **Product Name**, and then click **CONTINUE**.

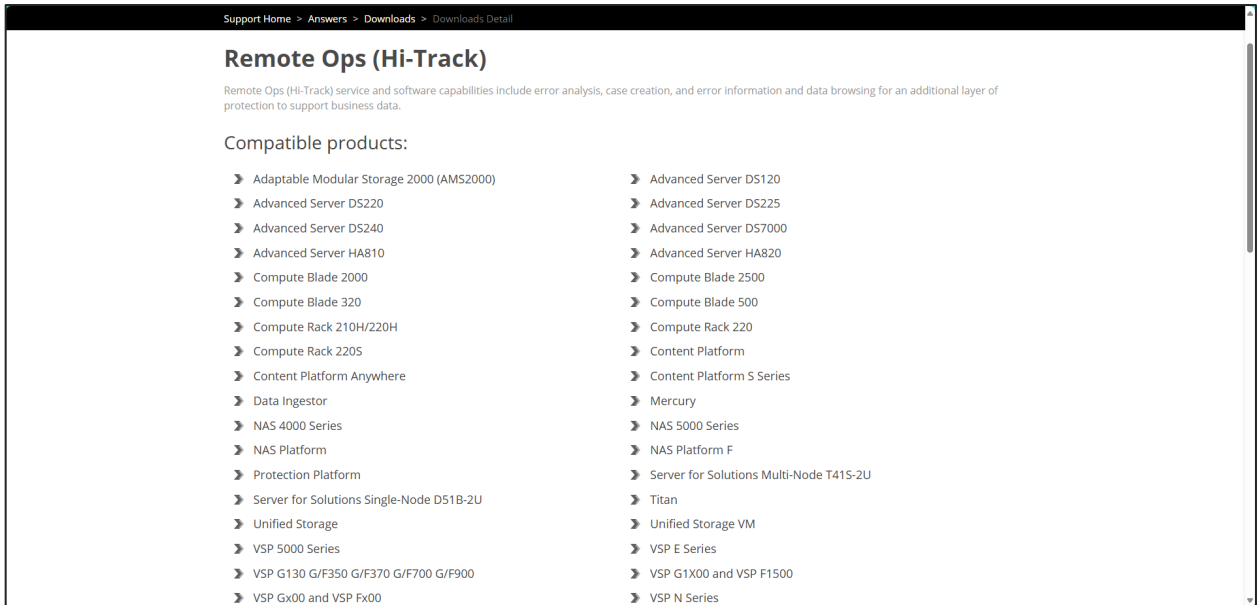


You now have full Customer access to manage cases, view site information, view product information, and subscribe to receive Technical Bulletins.

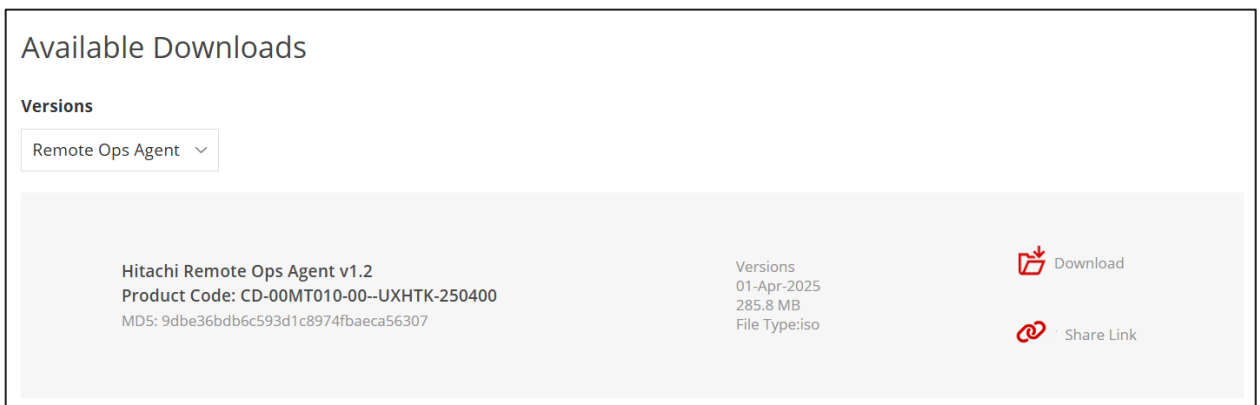
## Step 2: Install Hitachi Remote Ops Agent

Hitachi Remote Ops includes a powerful data innovation engine that provides actionable results from AI-driven insights, offering visibility into customer equipment and service events. Remote Ops collects and analyzes health data, reports configuration information, resolves system incidents, and preemptively opens cases to troubleshoot potential issues.

1. Log in to the [Support](#) website and obtain the Site ID for the location where the storage system is installed. If your site is not listed, [add the site](#).
2. Download the Hitachi Remote Ops Agent software located here: [Download](#).



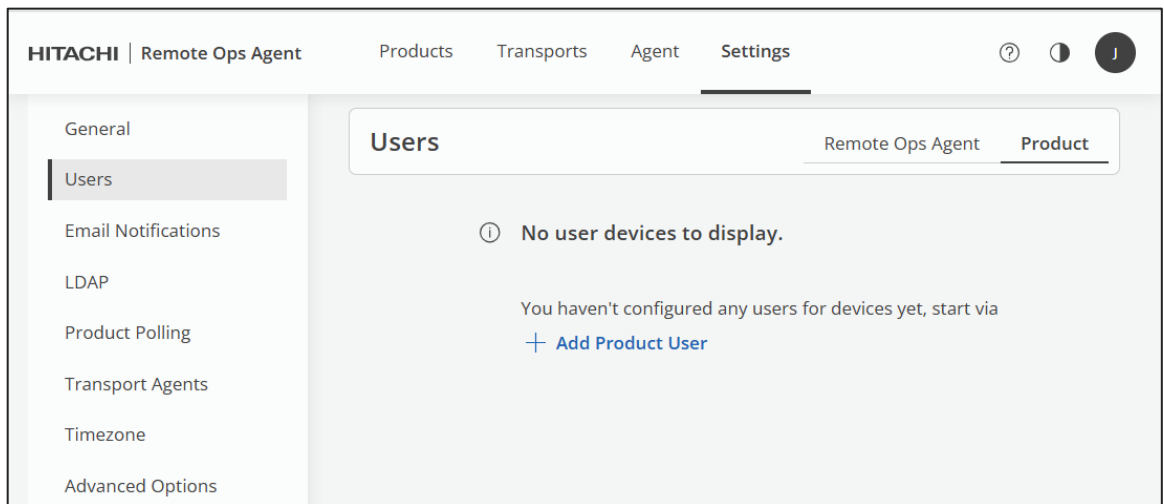
3. Scroll down to the Available Download section, and under Versions, select **Remote Ops Agent**. Then click **Download**.



4. Copy the zip file to the host system and unzip the file.
5. Install the Hitachi Remote Ops agent by running the following command with Administrator privileges:  
`RemoteOpsAgentSetup.exe`
6. Follow the prompts and accept the defaults. When the installation is complete, wait 5 minutes before opening the Remote Ops Agent user interface.
7. Open the Remote Ops Agent user interface:
  - a. From the start menu, select **Hitachi Vantara > Remote Ops Agent**.
  - b. From a browser, go to `https://localhost:6695`.
8. Log in using the credentials you set up during installation.  
The Remote Ops Agent user interface opens.
9. Add a product user. This includes the username and password used to access the storage system.

**Note:** This user must already exist on the storage system. You can use the maintenance user or create a new user.

- a. From the Settings tab, select **Users > Product**, and click **+Add Product User**.

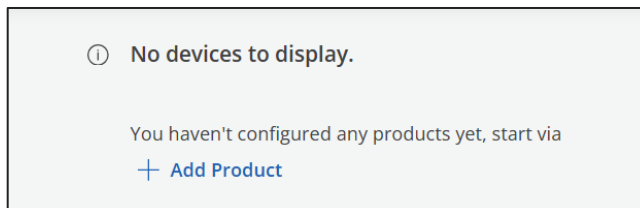


- b. Complete the following information, and then click **Add Product User**:

- Enter the Security Name. This is a user-defined name to help you more easily identify the username.
- Enter the Remote User name. This is the username used to access the storage system.
- For User Type, select **ESM**.
- Enter the remote password.

10. Add the storage system to monitor.

- a. From the Products tab, click **Add Product**.

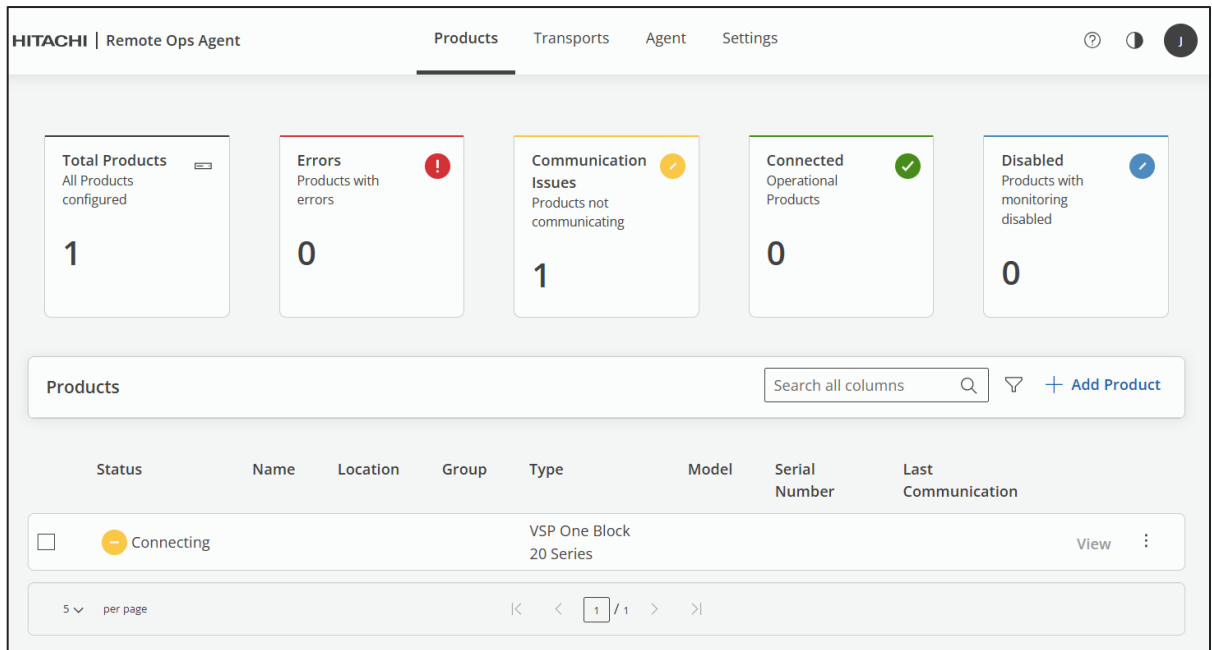


- b. For Product Type, select **VSP One Block 20 Series**.

- c. In the Product Details window, complete the following information, and then click **Add Product**:

- Verify that the Site ID is correct.
- Enter the ESM service IP address (storage system controller IP address).
- For ESM User, select the product user you created to access the storage system.
- For Report Communication Error, select one of the following:
  - **Default/No**: Do not report communication errors between the Remote Ops Agent and the product.
  - **Yes**: Report communication errors to the Remote Ops servers at Hitachi Vantara and email the configured email destinations.
  - **Local**: Report communication errors by emailing the configured email destinations, but do not report errors to the Remote Ops servers at Hitachi Vantara.

After you add the product, the Products page opens, and while communication is established, the status shows Connecting as follows:



The screenshot displays the Hitachi Remote Ops Agent interface. At the top, there are navigation tabs for Products, Transports, Agent, and Settings. The main dashboard features five summary cards:

- Total Products:** All Products configured, count: 1
- Errors:** Products with errors, count: 0
- Communication Issues:** Products not communicating, count: 1
- Connected:** Operational Products, count: 0
- Disabled:** Products with monitoring disabled, count: 0

Below the cards is a table titled "Products" with a search bar and a "+ Add Product" button. The table has the following columns: Status, Name, Location, Group, Type, Model, Serial Number, and Last Communication.

Status	Name	Location	Group	Type	Model	Serial Number	Last Communication
<input type="checkbox"/> Connecting				VSP One Block 20 Series			View

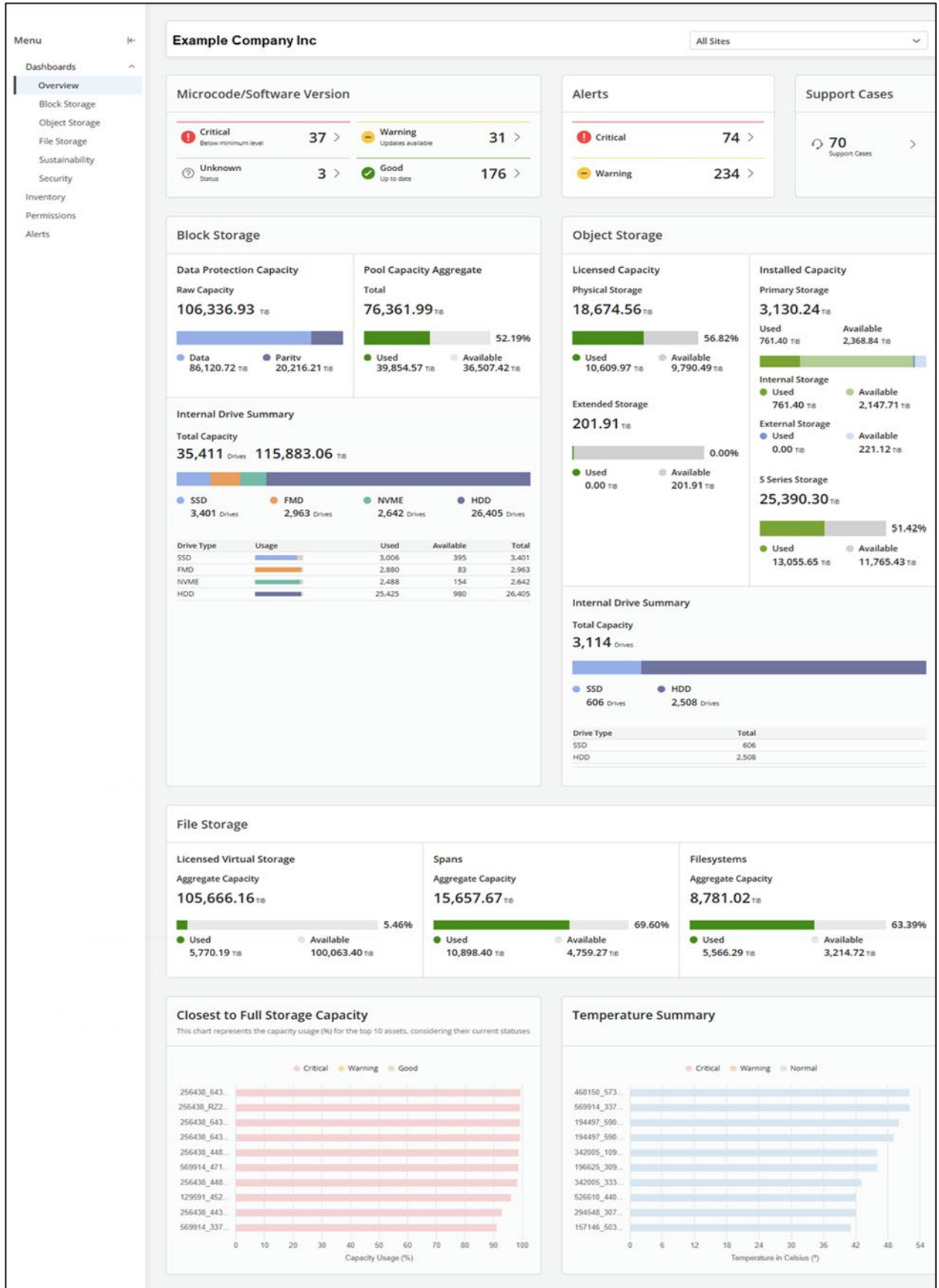
At the bottom of the table, there is a pagination control showing "5 per page" and "1 / 1".

### Step 3: Monitor storage health using Clear Sight

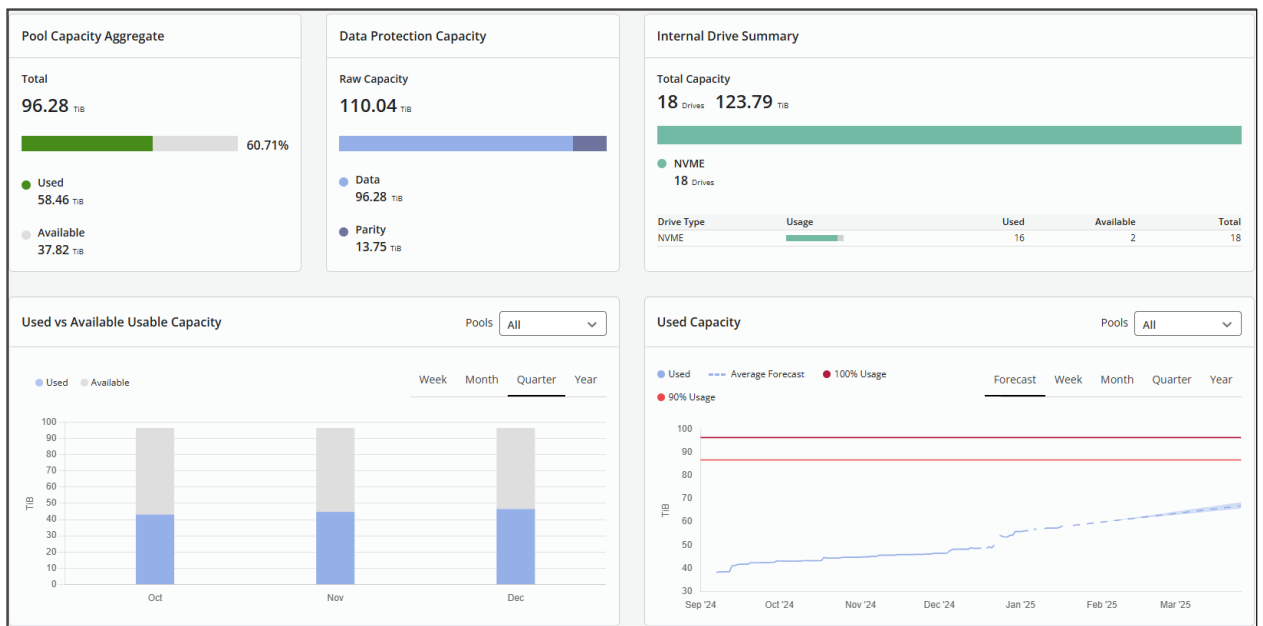
Using powerful AI-driven insights from Hitachi Remote Ops, Clear Sight provides easy-to-use dashboards displaying up-to-date inventory asset views, health status, risk management, and capacity planning. With Clear Sight, all connected storage systems appear on a single dashboard, whether at one site or multiple sites. The inventory view offers a quick system health status of drives, power and cooling, and configuration analysis. Additionally, Clear Sight provides risk detection for capacity, microcode level, and hardware, along with capacity planning based on 12 months of historical data.

1. Access the Clear Sight URL: <https://clearsight.hitachivantara.com>.

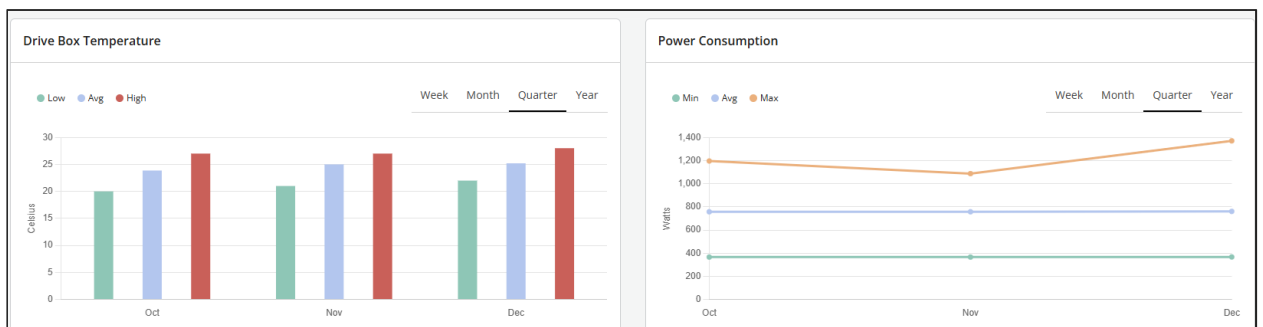
2. Log in using your Hitachi Vantara Support site credentials.



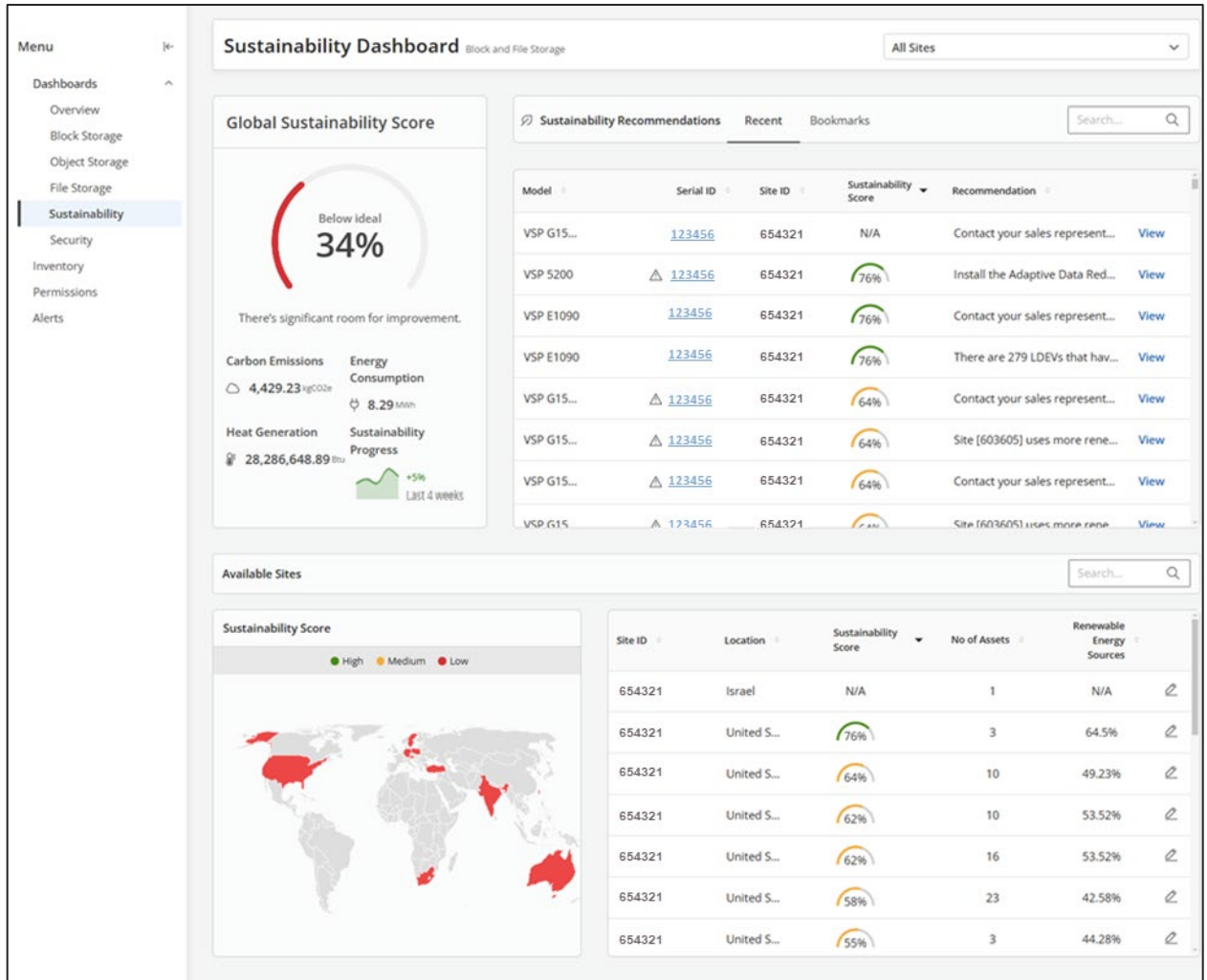
- To view monitored storage systems, in the navigation pane, click **Inventory**. Click any storage system to monitor the overall health, capacity usage, temperature, and power consumption.
  - **Capacity metrics:** Helps in the early detection of capacity shortage issues and forecasts the capacity consumption trends over a specific period.



- **Temperature and power consumption metrics:** Helps to identify systems running under optimal conditions and maintain an environmentally friendly and energy-efficient data center.



- To evaluate storage system efficiency and environmental impact, select **Dashboard > Sustainability**. The Sustainability score shows global, site, and system progress. Use the insights to identify areas of improvement.



- Global Sustainability Score:** Helps you assess the following:
  - Assesses performance against sustainability standards and tracks score trends over time.
  - Evaluates storage system efficiency based on energy consumption and carbon emissions.
  - Analyzes the thermal impact of storage systems on the surroundings based on the waste heat generated from power consumption.
- Sustainability Recommendations:** Provides a sustainability score for each storage system and actionable recommendations to improve efficiency and reduce energy usage.
 

To view the carbon emission for the storage system and other details, click the Site ID in the Sustainability Recommendations pane.
- Sustainability score:** Provides the sustainability score and renewable energy usage per site. View the site locations on a world map with high, medium, or low sustainability scores.

- To get a high-level overview of the security status of your storage systems, select **Dashboard > Security**. Use insights to identify systems at risk at the global, site, and system levels.

The screenshot displays the Security Dashboard with the following data:

Section	Green	Yellow	Red
Firmware Updates	131	1	21
Software Updates	19	26	3
Data Protection	142	66	16

**Recommendations Table:**

Model	Serial	Category	Severity	Recommendation
HCP	123456	Support Access Protection	Critical	Contact support for exclusive credentials.
HCP	123456	Encryption	Critical	0 objects are encrypted. Check encryption settings.
HCP	123456	Support Access Protection	Critical	Contact support for exclusive credentials.
HCP	123456	Encryption	Critical	0 objects are encrypted. Check encryption settings.
HCP	123456	Encryption	Critical	0 objects are encrypted. Check encryption settings.
HCP	123456	Encryption	Critical	0 objects are encrypted. Check encryption settings.
HCP	123456	Encryption	Critical	0 objects are encrypted. Check encryption settings.
HCP	123456	Encryption	Critical	0 objects are encrypted. Check encryption settings.
HCP	123456	Support Access Protection	Critical	Contact support for exclusive credentials.
HCP	123456	Encryption	Critical	0 objects are encrypted. Check encryption settings.

**Security Vulnerabilities Table:**

CVE Title	CVE Reference	Affected Model	Date
This is a CVE message about something	CVE-2024-0000	VSP E790	2024-06-27
This is a CVE message about something	CVE-2024-0000	VSP E590	2024-06-27
This is a CVE message about something	CVE-2024-0000	VSP F350	2024-06-27
This is a CVE message about something	CVE-2024-0000	VSP G350	2024-06-27
This is a CVE message about something	CVE-2024-0000	VSP G370	2024-06-27
This is a CVE message about something	CVE-2024-0000	VSP F700	2024-06-27
This is a CVE message about something	CVE-2024-0000	VSP G700	2024-06-27
This is a CVE message about something	CVE-2024-0000	VSP F900	2024-06-27
This is a CVE message about something	CVE-2024-0000	VSP G900	2024-06-27
This is a CVE message about something	CVE-2024-0000	VSP G200	2024-06-27

- Firmware, software, encryption updates:** Provides information on outdated firmware and software, and systems lacking encryption enabled and support access protections. To view the current microcode version and other storage system-related details, click the Serial number.
- Recommendations:** Provides severity levels and actionable recommendations to increase security compliance, improving security and resiliency by reducing risk.
- Security Vulnerabilities:** Provides information on registered vulnerabilities associated with your storage assets.

## Summary

With automated data collection through Hitachi Remote Ops and AI-driven insights, you can proactively identify equipment requirements, optimize operations, and make informed decisions. You can then continue using the platform for a comprehensive, on-demand view of both operational and business metrics, ensuring your storage environment is always running efficiently.

## References

- [Hitachi Remote Ops Installation and User Guide](#)
- [VSP 360 Clear Sight User Guide](#)
- [Quick Hardware Setup Guide](#)
- [VSP One Block](#)